

Barkbusters

FITTING INSTRUCTIONS Yamaha XTZ660 Tenere BMW R1100GS/R1150GS

1. Remove the original handguards (if fitted). Tenere also remove original bar end weights.
2. Loosely assemble the handlebar clamp on the handlebar. (See Diagram 1).
3. Tenere, insert Threaded Bar End Adaptor (3) into the end of the handlebar and tighten to OEM bar end weight specifications.
4. Insert M8x40mm countersunk bolt (1) through the outer end of the Barkbusters backbone (9). Then insert bar end weight (2), or OE weight on BMW and screw into the end of the handlebar.
5. Attach inner end of the Barkbusters aluminium backbone (9) to clamp connector (15) using button head bolt(14). (See Diagram 1)
6. Position the handguards so you are comfortable with the fit and tighten all bolts. The preferred position is for the Barkbusters backbone to be horizontal when viewed from side on.

Note: When fitting to Tenere you may need to adjust the handlebar position back or forward a little to clear fairing and tank when the steering is at full lock.

WARNING: Check operation of all handlebar controls, specifically the throttle, front brake, kill switch and clutch to ensure they are operating correctly and are in accordance with the OEM specifications. Do not ride the motorcycle if any controls are not operating correctly or if rear view mirror vision is obscured. Check periodically that all bolts are tight.

NB: Important Clamp Fitting Procedure

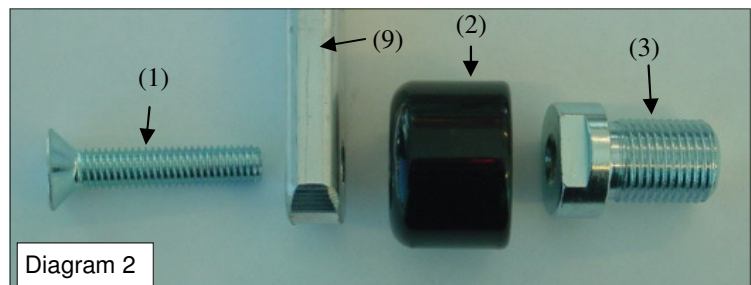
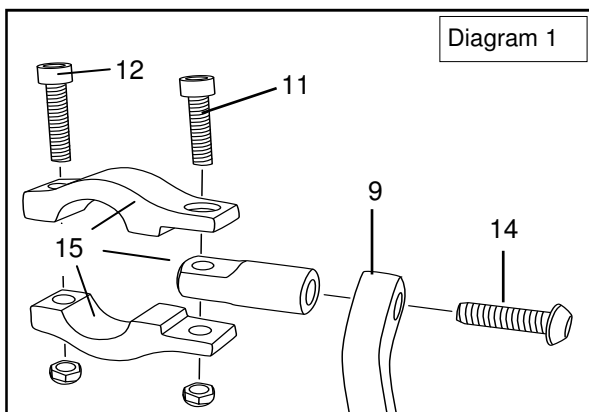
The clamp bolts must be tightened in the following order. (See Diagram 1).

Tighten bolt (14) through the handguard (9) to the swivel section of clamp assembly (15).

Tighten bolt (11) to solidly lock the swivel section between the clamp assembly (15).

Tighten bolt (12) to secure the clamp assembly (15) firmly to the handlebar.

Note: The clamp is designed to allow the nut on bolt (11) to pull into the recessed hole. This eliminates the need for a wrench after the bolt starts to tighten.



Note: Item (2) and (3) not needed for BMW R1100GS/R1150GS. Fit backbone (9) directly to original bar end weight with bolt (1) .

Disclaimer:

Rideworx inspects all products prior to packaging and strives toward improving its products. Our guarantee is limited to the replacement of defective products. This limited guarantee is in lieu of all other guarantees or warranties implied or expressed. Buyer assumes all risk for any and all damage caused to him/herself, a third party and/or property by virtue of failure of this product. We make no warranty as to products distributed by Rideworx, expressed or implied from our suppliers or third party vendors. This includes, without limitation, any warranties or merchantability and fitness for a particular purpose. All products are offered and designed for use with standard machines. Rideworx makes no claims as to the products effectiveness on modified machines. Rideworx is the sole determiner of abuse, misuse, installation errors and modifications. We assume no liability for any errors in listings, specifications, part numbers, prices or model applications. We reserve the right to change specifications, product descriptions, product quality, pricing and application at any time without notice and without further obligation. These handguards are not designed to prevent injury in the event of an accident or crash. Ensure all controls are free of the handguards each time you ride. Failure to follow the instructions or heed this warning could lead to loss of control of your motorcycle and/or accident, injury or death. By installing and/or using a Rideworx product, you hereby accept and understand these stated terms and conditions and have followed all instructional steps.



Phone: +61 2 4271 8244, Fax: +61 2 4271 8255
Email: info@barkbusters.net, Web: www.barkbusters.net