

MOTOPLASTIC, S.A.

Molí de la sal, 1 - 08400 Granollers (Barcelona) SPAIN

Tel. 34 93 849 06 33 - Fax 34 93 849 09 88

info@puig.tv

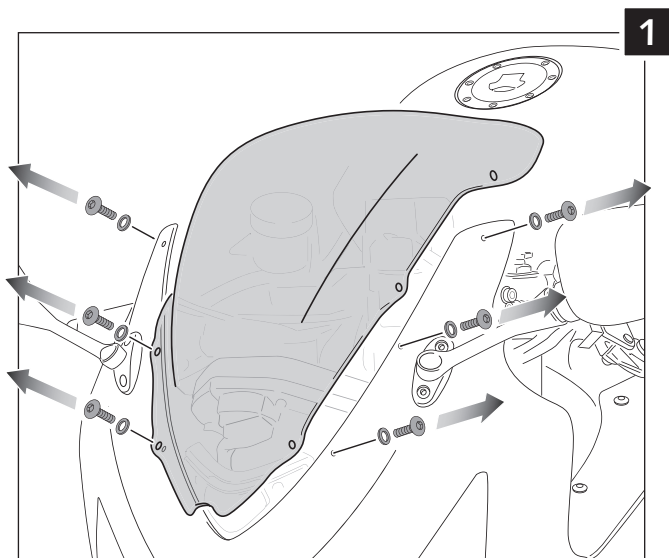
www.puig.tv

## INSTRUCCIONES DE MONTAJE - MOUNTING INSTRUCTIONS

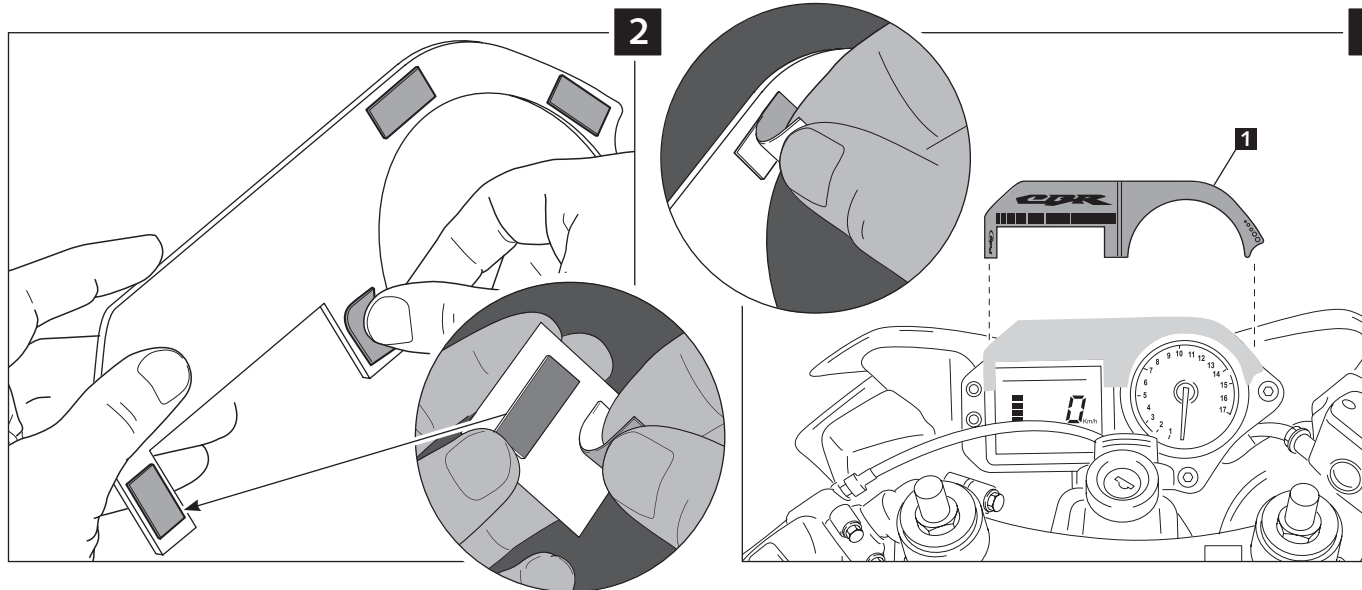
VISERA PARA EVITAR EL "EFECTO LUPA" DE LA CUPULA  
 PLATE TO AVOID "GLASS EFFECT" OF THE SCREEN

### HONDA CBR 600 F '01-'07

Ref.: 0861

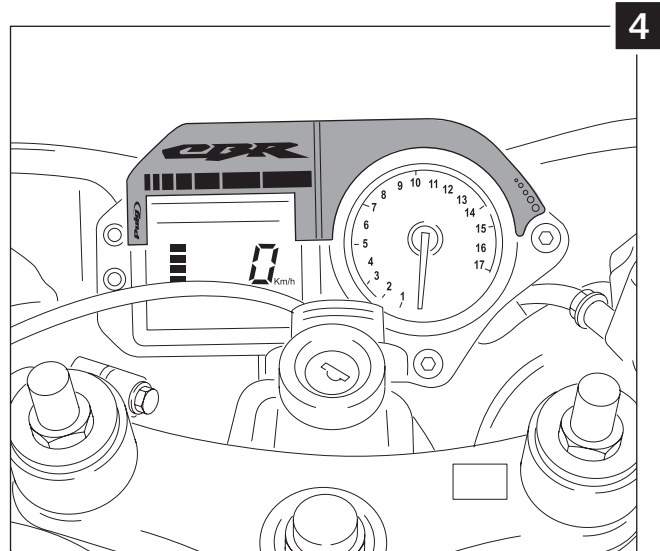


1





2

3



4

| ID. | DESCRIPCIÓN   | DESCRIPTION                        | QTY. |
|-----|---|------------------------------------|------|
| 1   |  Visera                                       | Plate                              | 1    |
| 2   |  Tira autoadhesiva de 2 unidades de 18mm x 7mm | Adhesive strips 2 units 18mm x 7mm | 2    |