



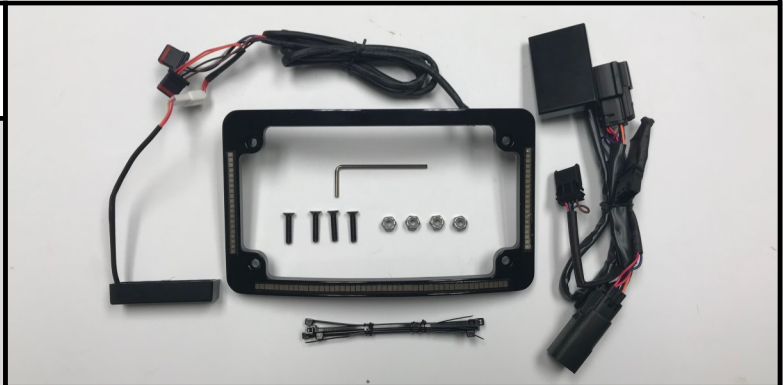
## Custom Dynamics® TruFLEX® Integrated Plate Frame Installation Instructions

We thank you for purchasing the Custom Dynamics® TruFLEX® Integrated Plate Frame! Our products utilize the latest technology and high quality components to ensure you the brightest, most reliable LED's on the market. We offer one of the best warranty programs in the industry and we back our products with excellent customer support, if you have questions before or during installation of this product please call Custom Dynamics® at 1(800) 382-1388.

**Part Number: TF05-BCM-B**  
**TF05-BCM-C**

### Package Contents:

- License Plate Frame W/Converter (1)
- Mounting Hardware Kit(1)
- BCM Y Harness Adapter (1)
- 4" Tie Wraps (10)



**Fits:** Plug and Play on 2014-2020 Street Glide (FLHX), Street Glide Special (FLHXS), Road Glide (FLTRX), Road Glide Special (FLTRXS), Road King Special (FLHRS), Electra Glide® Ultra Classic (FLHTCU), Ultra Classic Lo (FLHTCUL), Ultra Limited (FLHTK), Ultra Limited Lo (FLHTKL), Road Glide Ultra (FLTRU), Road Glide Limited (FLTRK) and 2016 Road Glide Ultra CVO™ (FLTRUSE) and 2016-2020 Limited CVO™ (FLHTKSE).

**NOTE:** Confirm license plate mounting bracket before purchasing. OEM mounting bracket may need to be modified or changed for radius license plate frame to mount properly. Plate frame requires 12 degree curved mounting.



## ATTENTION

Please read all Information below before Installation

**Warning:** Disconnect negative battery cable from battery; refer to owner's manual. Failure to do so may result in electrical shock, injury, or fire. Secure negative battery cable away from positive side of battery and all other positive voltage sources on vehicle.

**Safety First:** Always wear appropriate safety gear including safety glasses when performing any electrical work. It is highly recommended that safety glasses be worn throughout this installation process. Be sure vehicle is on level surface, secure and cool.

**Important:** This product is designed and intended for use as auxiliary lighting only. It is NOT intended to replace any original equipment lighting installed on the vehicle and should not be used for that purpose. This product must be wired so that it does not interfere with any original equipment lighting.

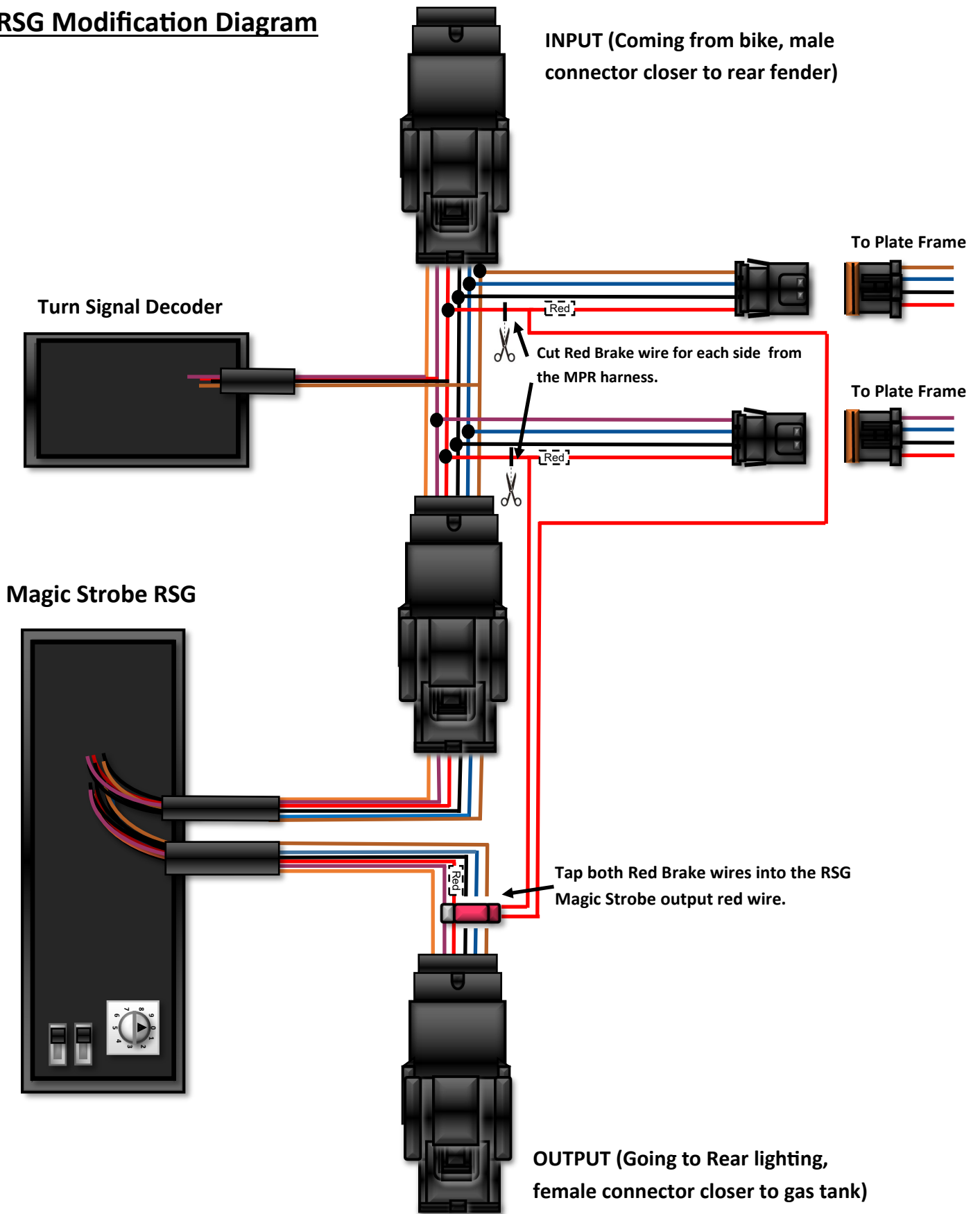
### **Installation:**

1. Secure motorcycle on level surface. Remove seat. Disconnect negative battery cable from the battery.
2. Locate and unplug the lighting connector to the rear fender. Refer to photos on Page 3.
3. Plug the provided BCM Y Harness Adapter, in-line, into the rear lighting harness and into the bike's main wiring harness.  
**Note: If installing with a Magic Strobe RSG module, refer to the RSG modification diagram on Page 2.**
4. Mount the license plate frame in the desired location with the provided hardware. Notch the license plate at the plate frame wire location to allow the license plate to sit flush inside the plate frame.
5. Route the License Plate frame harness to the BCM Y Harness. Using the provided wire ties, secure the harness from becoming cut, frayed, or pinched.
6. Connect the License Plate frame harness to the BCM Y Harness. Plug in the left side (purple) and right side (brown) female connectors from the HD Y Harness to the color corresponding male connectors on the license plate frame harness
7. Reconnect the negative battery cable to the battery.
8. Perform a BCM sync by turning the ignition on, turn the 4 way hazards on, turn the ignition off. Allow the 4 way hazards to run for 3-4 minutes. Turn the ignition on. Turn the 4 way hazards off. Turn the ignition off.
9. Reinstall motorcycle seat and test all lighting for proper operation for run, brake and turn before riding.

**Questions? Call us at: 1 (800) 382-1388 M-TH 8:30AM-5:30PM / FR 9:30AM-5:30PM EST**

# Installation Instructions - Page 2

## RSG Modification Diagram



## Installation Instructions - Page 3

Harness Connector Location—Top Rear Fender



For: Road King, Electra Glide Ultra Classic, Electra Glide Ultra Classic Lo, Electra Glide Ultra Limited, Electra Glide Ultra Limited Lo, Road Glide Ultra CVO

Harness Connector Location—on top of ECM



For: Road King CVO, Street Glide CVO