



Custom Dynamics®
ProBEAM® LED Tour-Pak Arms
Installation Instructions

We thank you for purchasing the Custom Dynamics® ProBEAM® LED Tour-Pak Arms! Our LEDs offer maintenance free service and higher visibility. Our ProBEAM® product line utilizes the latest technology and automotive grade components to ensure the highest level of reliable service. Custom Dynamics® offers one of the best warranty programs and customer support in the industry. If you have any questions during the installation of this product please call us at 1(800) 382-1388.

Part Number: PB-TP-ARM-13-R PB-TP-ARM-13-S

Package Contents:

- ProBEAM® Tour-Pak LED Arm (Pair)
- Wiring Harness (1)
- Wire Tie (8)
- Wire Tie Holder (6)
- Wire Grommet (2)

Fitment: 2006-2013 Harley-Davidson® Electra Glide® Ultra Classic/Limited Models, 2011-2013 Road Glide® Ultra & 2008-2013 Tri Glide® Models with King & Ultra Tour-Pak®



ATTENTION

Please read all Information below before Installation

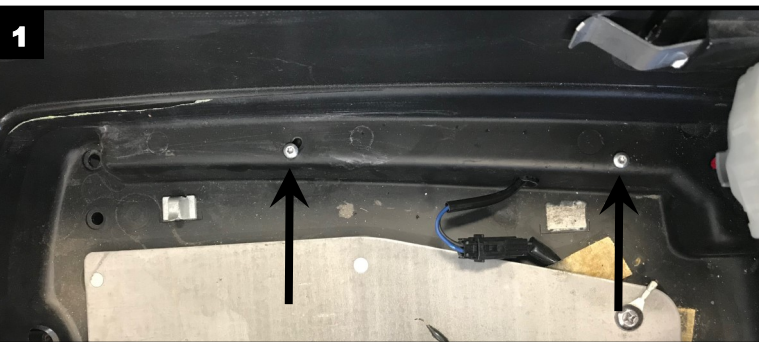
Warning: Disconnect negative battery cable from battery; refer to owner's manual. Failure to do so may result in electrical shock, injury, or fire. Secure negative battery cable away from positive side of battery and all other positive voltage sources on vehicle.

Important: Motorcycle should be secured on a level surface for installation.



Installation:

1. Secure motorcycle on level surface. Remove seat and disconnect negative battery cable from the battery.
2. Remove all contents and liner from the Tour-Pak®.
3. Remove the 4 screws (2 per side) holding the existing Tour-Pak® marker lamps, refer to Photo 1.



4. Disconnect the wiring connectors for the existing Tour-Pak® marker lamps and remove the marker lamps Refer to Photo 2. The stock wiring connectors will not be used for the new LED Tour-Pak® arms.
5. Feed the wire and connector of the new Tour-Pak® LED Arms through the wire hole in the Tour-Pak®. Place the Tour-Pak® LED Arms in position.
6. Using the 4 existing marker lamp screws, removed in Step 3, secure the new Tour-Pak® LED Arms to the Tour-Pak®. Install the provided Wire Grommets in the wire hole of the Tour-Pak®.

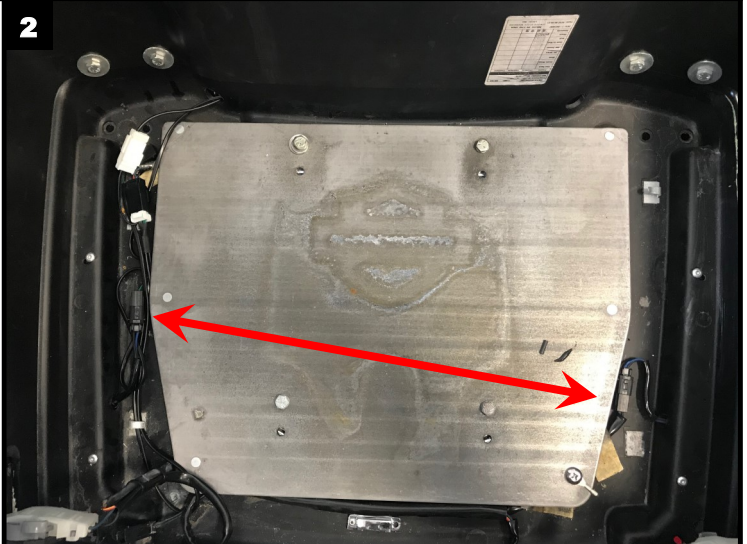
Questions? Call us at: 1 (800) 382-1388 M-TH 8:30AM-5:30PM / FR 9:30AM-5:30PM EST

Installation Instructions - Page 2

Installation Continued:

7. Locate the wire connector going to the rear fender lighting harness under the seat. Refer to Photo 3. Plug the provided Tour-Pak® Wiring Harness in-line with the rear fender lighting harness connector.
8. Route the marker lamp connectors of the Tour-Pak® Wiring Harness into the Tour-Pak® and connect to the new Tour-Pak® LED Arms as shown in Photo 4. Make sure that any part of the wiring harness will not be pinched or damaged once the Tour-Pak® liner or seat are installed.
9. Reinstall the Tour-Pak® liner and contents.
10. Reconnect the negative battery cable to the battery and reinstall the seat.
11. Check operation of all lighting before riding in run, brake, turn and brake/turn modes.

2



3



4

