



YOSHIMURA

RESEARCH&DEVELOPMENT OF AMERICA, INC.

5420 DANIELS STREET STE A, CHINO CA., 91710 · (800) 634-9166 · (909) 628-4722 · FAX (909) 591-2198

www.yoshimura-rd.com

ENDURO SERIES

Qualified Manufacturer Declared "Replacement Part"

2019 ~ 2020

Honda CRF125F

221210R520 (SS/CF)

RS-9T Stainless Steel Full-System



Enduro Series systems are:

- Equipped with USFS-approved spark arrestor.
- CARB/EPA tail-pipe emissions compliant.
- All applications are marked with appropriate EPA noise labels.
- Have not been tested for EPA new vehicle noise compliance.

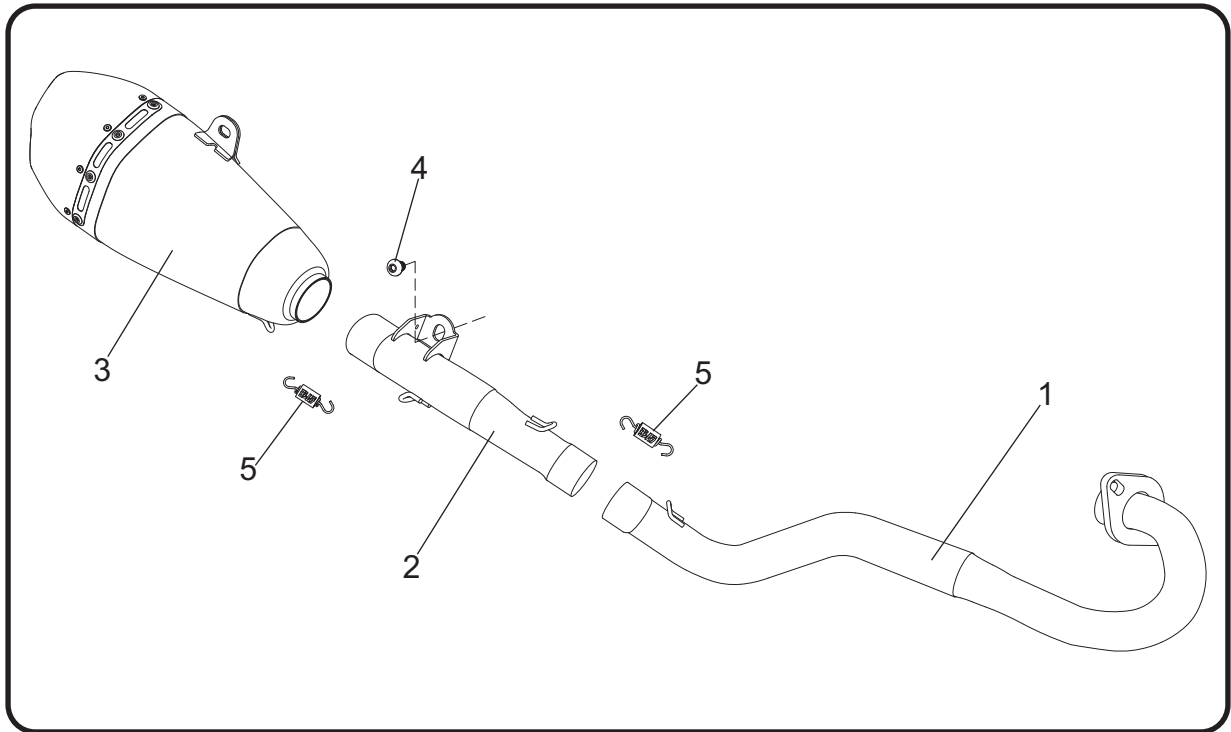


You must know how to remove and replace your stock exhaust in order to install this product otherwise have it installed by a professional mechanic. Keep all stock parts from your existing system as some components may be necessary to install your new Yoshimura exhaust depending on the application. Read through all instructions before beginning installation. Exhaust system can be extremely hot. Let motorcycle cool down before beginning installation. Always wear hand and eye protection and take precautionary measures to avoid injury.



NOTE: IN THE STATE OF CALIFORNIA, IT IS ILLEGAL TO MODIFY THE EMISSION CONTROL SYSTEM, WHICH INCLUDES THE CARBURETORS OF ANY VEHICLE.

Assembly Diagram



No.	Item	Description	Qty.
1	22121-101	Yoshimura Header	1
2	22121-144	Yoshimura Tailpipe	1
3	221210R520-RMA	Yoshimura Muffler	1
4	M8X12BHS	8mm x 12mm Button Head Screw	1
5	RACE-SPX-2	Short Exhaust Spring	2
**	ST-200	Spring Puller Tool	1
**	17100	Sticker Kit Sheet	1

** Not shown in diagram.

CAUTION: Exhaust system can be extremely hot. Let motorcycle cool down before beginning installation. Always wear hand and eye protection and take precautionary measures to avoid injury.

WARNING: Always properly support vehicle with a stand and/or lift when servicing or performing any work. Unstable vehicles may present dangerous conditions and may cause property damage and/or personal injury.

NOTE: Read through all instructions before beginning installation.

Removal

1. Remove right side panel.
2. Loosen muffler exhaust clamp. While securely supporting the muffler, remove the two muffler chassis mount bolt and carefully remove the stock muffler assembly by sliding toward the rear.
3. While securely supporting the stock header, remove header nuts and carefully remove the stock header.

Note: The stock exhaust port gasket will be re-used. Inspect and replace if necessary.

Installation

1. Install (No. 1) *22121-101*, header using the stock header nuts. Do not torque at this time.

Note: Exhaust port gasket is required when installing Yoshimura header.

2. Install (No. 2) *22121-144*, tailpipe inlet onto header outlet. Align tailpipe bracket to chassis mount and secure using the (No. 4) *M8X12BHS*, 8mm button head screw. Do not torque at this time.
3. Install (No. 3) *221210R520-RMA*, muffler onto (No. 2) *22121-144*, tailpipe outlet. Align muffler bracket to chassis mount and secure using the stock muffler mount bolt. Torque muffler mount bolt to factory specifications.

4. Torque (No. 4) *M8X12BHS*, 8mm button head screw 23 Nm (2.3 kg-m, 17 ft-lb).
5. Torque header nuts to factory specification.
6. Install (No. 3) *RACE-SPX-2*, short exhaust spring between muffler to tailpipe and tailpipe to header using the supplied *ST-200*, spring puller tool.
7. Re-install right side panel following the opposite steps of removal.
8. Before starting motorcycle, check for proper clearance between new exhaust system and frame, rear suspension (i.e. tire, swingarm, brakes, rear shock, and etc.) If any problem is found, please carefully follow through the installation steps again. If problem still persists, please call Yoshimura Tech Department at (800) 634-9166 / in CA (909) 628-4722.
9. It is recommended that the muffler and tailpipe be wiped down with rubbing alcohol to remove oil and fingerprints. This will help prevent tarnishing of the finish after the exhaust is heated up.

Note: After starting motorcycle, it is normal for new exhaust system and muffler to emit smoke until oil residue burns off.