



## Custom Dynamics® LED Halo Passing Lamp Trim Ring Installation Instructions

We thank you for purchasing the Custom Dynamics® LED Halo Passing Lamp Trim Ring. Our products utilize the latest technology and high quality components to ensure you the most reliable service. We offer one of the best warranty programs in the industry and we back our products with excellent customer support, if you have questions before or during installation of this product please call Custom Dynamics® at 1(800) 382-1388.

### Part Number:

CDTB-45TR-3B, CDTB-45TR-3C

### Package Contents:

- LED Halo Passing Lamp Trim Ring W/Screw (2)
- AW Converter Harness (2)
- 8" Chrome Wire Tie (4)

### Fitment:

1996- 2005 Harley-Davidson® Ultra Classic (FLHTC/U), Ultra Limited (FLHTK), Electra Glide CVO™ (FLHTCSE) & Tri Glide® (FLHTCUTG); 1993- 2017 Harley-Davidson® Softail® Deluxe (FLSTN), Deluxe CVO™ (FLSTNSE) and Heritage Softail® (FLST/C)



## ⚠ ATTENTION ⚠

Please read all Information below before Installation

**Safety First:** Make sure the bike is parked on a level surface and bike 's mechanical components are cool to the touch. To prevent electrical shock, disconnect the negative battery terminal from the battery before beginning installation.

**Note:** You will have to remove the outer front fairing in order to complete this installation. Please refer to your manufacturer service manual if unsure of this procedure.

**Care:** Take special care in cleaning the Trim Rings, Never use abrasive polishes or cleaners as these may scratch the finish.

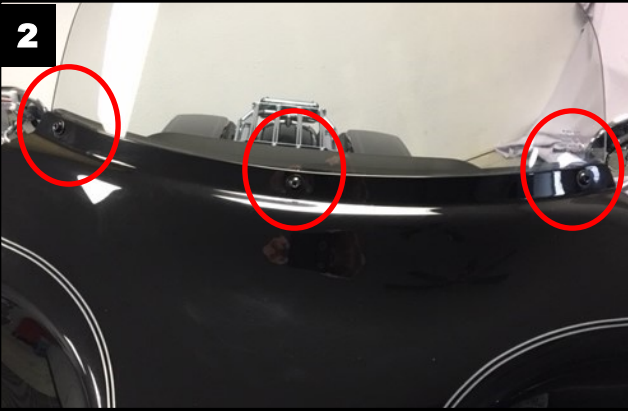
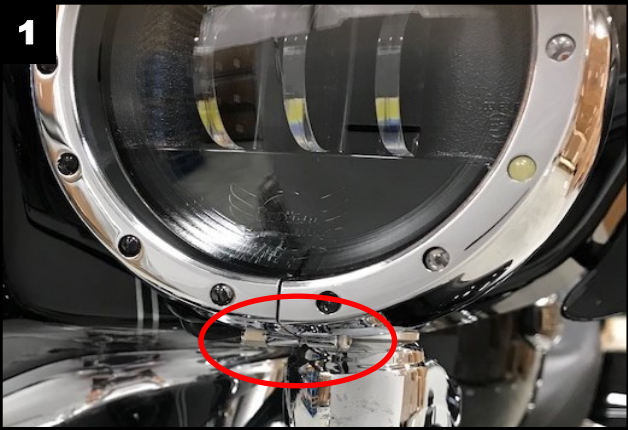
**Notice:** This product is designed and intended for use as auxiliary lighting on motorcycles only. This product is NOT intended to replace any original equipment lighting installed on the motorcycle and should not be used for that purpose. This product must be wired such that it does not interfere with any original equipment lighting.

**Installation:** 1996- 2005 Harley-Davidson® Ultra Classic (FLHTC/U), Ultra Limited (FLHTK), Electra Glide CVO™ (FLHTCSE) & Tri Glide® (FLHTCUTG)

1. Carefully remove all components from the packaging. Take care removing the harness as not to damage the wiring or pull any wires out of the connectors. Un-ravel the wire bundles on the passing lamp trim rings.
2. Refer to the factory service manual for replacing passing lamp trim rings and removing the fairing before continuing. Remove both of the stock passing lamp trim rings from the passing lamp housings.
3. Install the new LED Halo Passing Lamp Trim Rings on the passing lamp housings. Secure the new trim rings by tightening the trim ring screw shown in Picture 1. Use caution not to overtighten the trim ring screw.
4. Cover the passing lamps with a soft cloth to protect them and the fairing from being damaged during the fairing removal.
5. Remove the top 3 T27 Torx Bolts from the outer fairing as shown in Picture 2. Remove the windshield and store it in a safe place for reinstallation later.

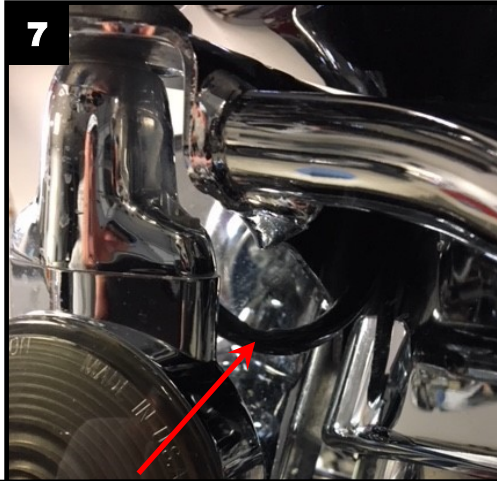
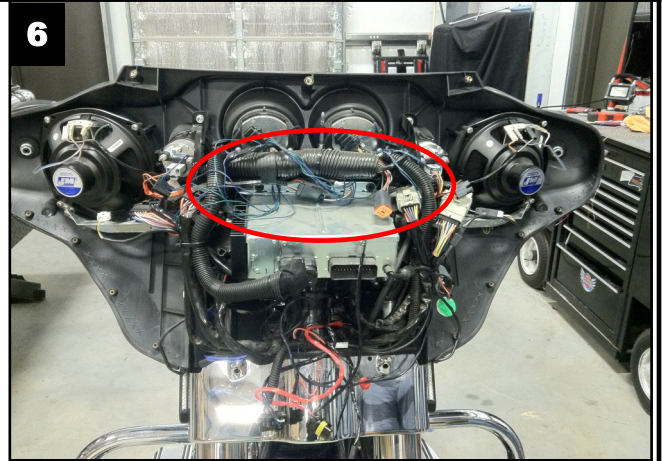
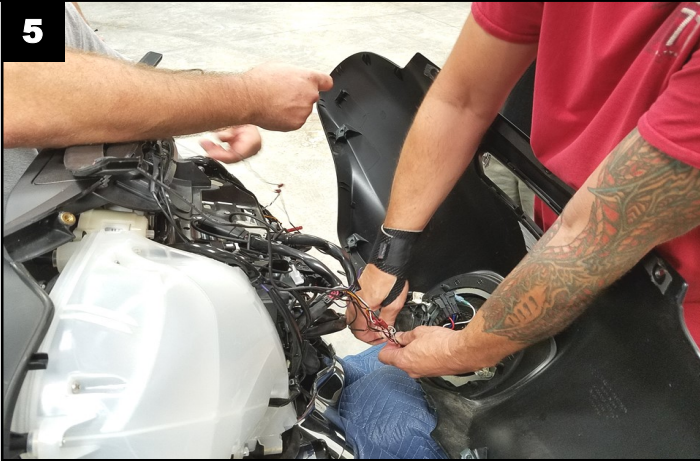
Questions? Call us at: 1 (800) 382-1388 M-TH 8:30AM-5:30PM / FR 9:30AM-5:30PM EST

## Installation Instructions - Page 2



6. Reinstall the center T27 Torx Bolt only that was removed in Step 5. Lightly tighten the center bolt to secure the fairing while you remove the remaining 4 inner fairing bolts.
7. Remove the 4 inner fairing bolts. The lower 2 inner fairing bolts are located on the lower triple tree as shown in Picture 3. Refer to Picture 4 for the upper 2 inner fairing bolts.
8. While standing in front of the bike and holding the fairing, remove the center outer fairing T27 Torx bolt and pull the fairing slightly away from the bike.
9. With the fairing slightly pulled away from the bike, disconnect the connector from the headlamp as shown in Picture 5. Lay the fairing on a protected flat surface to prevent damage.
10. With the fairing removed, locate the connectors on the inner fairing that go to each of the front turn signals. The connectors are located in the areas circled in Picture 6. Unplug the connectors and connect the pass-through side of the AW Converter Harness to the factory turn signal wiring harness.
11. With the AW Converter harness installed to the factory wiring harness, connect the passing lamp trim ring harness to the AW Converter harness. With the zip ties provided, secure the trim ring wire to the turn signal and passing lamp factory wiring as shown in Picture 7. Secure the harnesses to prevent the wires from being damaged during the fairing installation as shown.
12. Reinstall the fairing and windshield in the reverse order that it was removed.
13. Check operation of the LED Halo Passing Lamp Trim Rings, turn signals and passing lamps in all modes.

## Installation Instructions - Page 3

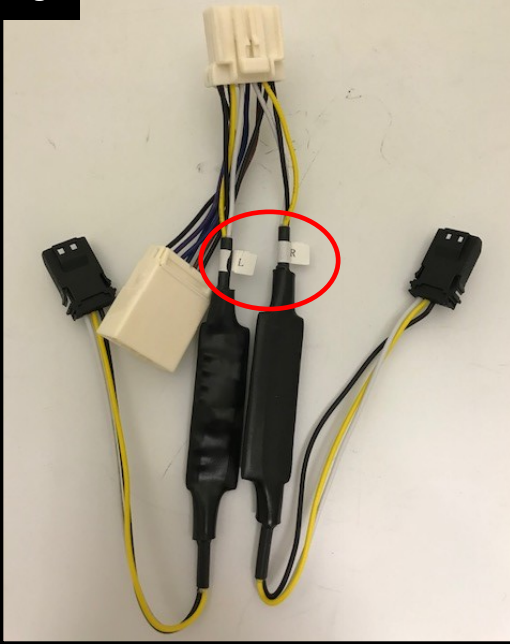


**Installation:** 1993- 2017 Harley-Davidson® Softail® Deluxe (FLSTN), Deluxe CVO™ (FLSTNSE) and Heritage Softail® (FLST/C)

1. Carefully remove all components from the packaging. Take care removing the harness as not to damage the wiring or pull any wires out of the connectors. Un-ravel the wire bundles on the passing lamp trim rings.
2. Refer to the factory service manual for replacing passing lamp trim rings and removing the gas tank before continuing.
3. Remove both of the stock passing lamp trim rings from the passing lamp housings.
4. Install the new LED Halo Passing Lamp Trim Rings on the passing lamp housings. Secure the new trim rings by tightening the trim ring screw as shown in Picture 1. Use caution not to overtighten the trim ring screw.
6. Follow the manufacturers instructions on removing the gas tank. For this installation, it is not necessary to remove the gas tank completely, just remove all of the mounting hardware, then disconnect the main supply & overflow fuel lines. **Note:** Be aware that when removing the main fuel supply line, a small amount of fuel may leak from the valve. Clean up any leaked gas appropriately.

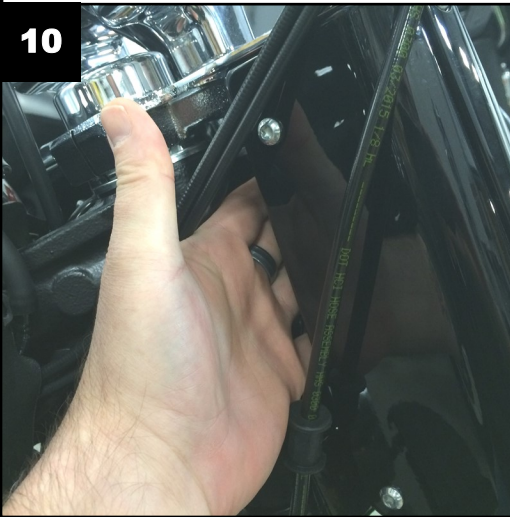
## Installation Instructions - Page 4

9



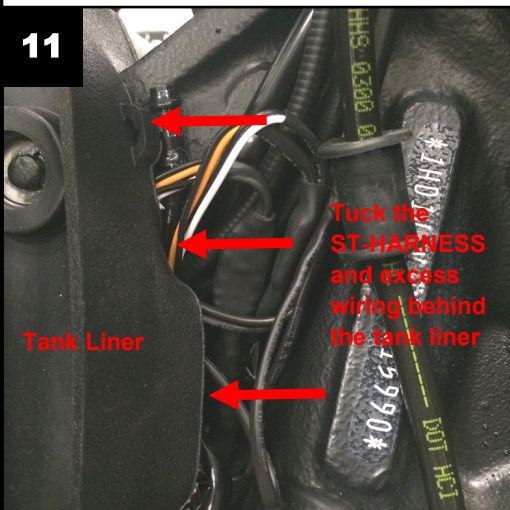
6. Now that the gas tank is free to move, slide the gas tank back along the frame approximately 6" to expose rubber frame cover. Pull the cover back to expose the 8 pin harness connector as shown in Picture 8. In the photo the connector is located on the right side of the frame, depending on the year and model, it may be located on the left side.
7. Plug the AW Converter Harness into the 8 pin factory harness connector. The space is tight, you may need to flex the wires at an angle in order to get leverage to plug the connector in. Make sure the connector clicks.
8. With the AW Converter Harness installed route the wires from the trim rings and connect the trim ring wires to the AW Converter Harness. The connectors on the AW Converter Harness are labeled (L) for the left side trim ring and (R) for the right side trim as shown in Picture 19.
9. Grab both sets of wires from the trim rings, and tuck them into the back of the fork shroud as shown in Picture 10. Allow for 5-6 inches of slack in the wires to allow the handlebars to turn freely. If you desire, wire tie wraps may be used to keep the wires in place.

10



10. Gather the AW Converter harness and connections and neatly tuck them in behind the gas tank liner. Make sure the wires will not get pinched or frayed when the tank is moved back into it's normal position as shown in Picture 12.
11. Move the gas tank back to its normal position and reinstall the mounting hardware, main fuel supply line and over flow line. Verify that you have no fuel leaks and any fuel spills are cleaned up appropriately before starting the motorcycle.
12. Check operation of the LED Halo Passing Lamp Trim Rings, turn signals and passing lamps in all modes.

11



Questions? Call us at: 1 (800) 382-1388 M-TH 8:30AM-5:30PM / FR 9:30AM-5:30PM EST