



## Custom Dynamics® LED Halo Passing Lamp Trim Ring Installation Instructions

We thank you for purchasing the Custom Dynamics® LED Halo Passing Lamp Trim Ring. Our products utilize the latest technology and high quality components to ensure you the most reliable service. We offer one of the best warranty programs in the industry and we back our products with excellent customer support, if you have questions before or during installation of this product please call Custom Dynamics® at 1(800) 382-1388.

### Part Number:

CDTB-45TR-1B, CDTB-45TR-1C

### Package Contents:

- LED Halo Passing Lamp Trim Ring W/Screw (2)
- AW Converter Harness (2)
- 8" Chrome Wire Tie (4)

### Fitment:

2014 - 2019 Harley-Davidson® Ultra Classic (FLHTCU), Ultra Classic Low (FLHTCUL), Ultra Limited (FLHTK), Ultra Limited Low (FLHTKL), CVO Limited (FLHTKSE) and Tri Glide (FLHTCUTG)



## ⚠ ATTENTION ⚠

Please read all Information below before Installation

**Safety First:** Make sure the bike is parked on a level surface and bike 's mechanical components are cool to the touch. To prevent electrical shock, disconnect the negative battery terminal from the battery before beginning installation.

**Note:** You will have to remove the outer front fairing in order to complete this installation. Please refer to your manufacturer service manual if unsure of this procedure.

**Care:** Take special care in cleaning the Trim Rings, Never use abrasive polishes or cleaners as these may scratch the finish.

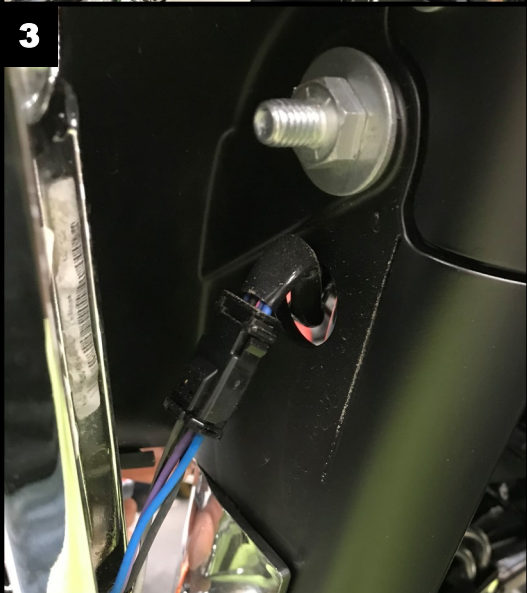
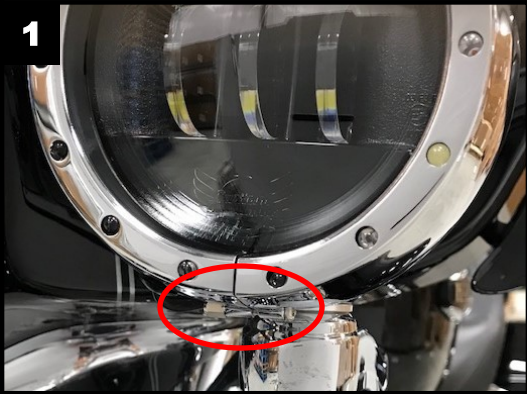
**Notice:** This product is designed and intended for use as auxiliary lighting on motorcycles only. This product is NOT intended to replace any original equipment lighting installed on the motorcycle and should not be used for that purpose. This product must be wired such that it does not interfere with any original equipment lighting.

### Installation:

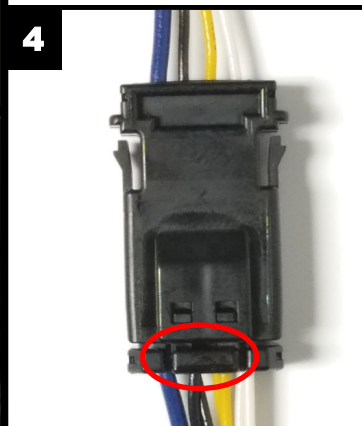
1. Carefully remove all components from the packaging. Take care removing the harness as not to damage the wiring or pull any wires out of the connectors. Un-ravel the wire bundles on the passing lamp trim rings.
2. Refer to the factory service manual for replacing passing lamp trim rings before continuing. Remove both of the stock passing lamp trim rings from the passing lamp housings.
3. Install the new LED Halo Passing Lamp Trim Rings on the passing lamp housings. Secure the new trim rings by tightening the trim ring screw shown in Picture 1. Use caution not to overtighten the trim ring screw.
4. Remove the 1/2" nuts that secure the turn signal and passing lamp assembly to the fork shown in Picture 2. Store 1/2" nuts in a safe place for reinstallation later. Pull assembly away from the fork to reveal the black wiring connector as shown in Picture 3.
5. Unplug the connector by pushing in on the tab located on the male side of the connection as shown in Picture 4. Push the tab and pull apart both sides at the same time. Remove the turn signal and passing lamp assembly from the bike completely and store in a safe place for reinstallation.
6. Repeat steps 4 and 5 on the opposing side turn signal and passing lamp assembly.

Questions? Call us at: 1 (800) 382-1388 M-TH 8:30AM-5:30PM / FR 9:30AM-5:30PM EST

## Installation Instructions - Page 2



7. Remove the top 3 T27 Torx Bolts from the outer fairing as shown in Picture 5. Remove the windshield and store it in a safe place for reinstallation later.
8. Reinstall the center T27 Torx Bolt only that was removed in Step 7. Lightly tighten the center bolt to secure the fairing while you remove the remaining 4 inner fairing bolts.
9. Remove the 2 T27 Torx bolts from the left and the right side of the inner fairing as shown in Picture 6. Save the bolts for reinstallation.
10. While standing in front of the bike and holding the fairing, remove the center outer fairing T27 Torx bolt and pull the fairing slightly away from the bike.
11. With the fairing slightly pulled away from the bike, disconnect the connector from the headlamp as shown in Picture 7. Lay the fairing on a protected flat surface to prevent damage.
12. With the fairing removed, connect the pass-through side of the AW Converter Harness to the factory turn signal wiring harness. To do this, plug in the male end of the pass-through portion of the AW Converter harness into female connector on the turn signal factory wiring harness as shown in Picture 8. Repeat step for the opposing side.
13. Push the female plug on the pass-through portion of the AW Converter harness into the hole in the fork frame and plug it into the male connector from the turn signal and passing lamp assembly as shown in Picture 9. Reinstall the turn signal and passing lamp assembly onto the fork frame and secure with the original 1/2" nuts. Repeat step for the opposing side.
14. With the turn signals reinstalled, connect the passing lamp trim ring harness to the pass-through harness. With the chrome zip ties provided, secure the trim ring wire to the turn signal and passing lamp assembly as shown in Picture 10. Secure the harnesses to prevent the wires from being damaged during the fairing installation as shown in Picture 11.
15. Run the 4 way hazard flashers for 3 minutes to sync BCM with the new passing lamp trim rings. After you have sync'd the BCM check for proper operation of both passing lamp trim rings.
16. Cover the passing lamps with a soft cloth to protect them and the fairing from being damaged during the fairing installation.
17. Reinstall the fairing and windshield in the reverse order that it was removed. **NOTE: THE 4 INNER FAIRING BOLTS ARE TWO DIFFERENT LENGTHS!** The 2 longer bolts go in the top holes and the 2 shorter bolts go in the bottom holes of the inner fairing.
18. Check operation of the LED Halo Passing Lamp Trim Rings, turn signals and passing lamps in all modes.



# Installation Instructions - Page 3

