

Saddlemen™

INSTALLATION INSTRUCTIONS

www.saddlemen.com

BACKREST, SEAT & SISSYBAR BAG

BR 3400



FEATURES OF THE BACKREST, SEAT & SISSYBAR BAG:

- Two mounting systems included - a seat harness or adjustable sissy bar strap system easily attaches bag to your motorcycle's seat, luggage rack, or sissy bar.
- Quick disconnect mounting straps and sissy bar sleeve allow the bag to be removed from your motorcycle in seconds
- Includes back rest pad you can position for your, or your passenger's, riding comfort
- Sturdy grip handle for convenient carrying - included backpack straps allow you to carry the bag on your back with ease
- Select a fabric bag, or leather-grained SaddleHyde bag (with or without studs), that best matches your motorcycle or scooter
- Top-loading main compartment holds one full-face helmet and other cargo
- Another main compartment, 5 outside pockets, 5 internal mesh pockets and 2 outer mesh pockets let you store a variety of cargo
- Padded laptop storage compartment & organizer pocket
- Weather-resistant rain cover with security tether protects the bag from the elements
- Mini-padlocks with extra keys help you secure your belongings in the bag

⚠ WARNING

READ THESE INSTRUCTIONS THOROUGHLY BEFORE INSTALLATION!

Because of the variety of motorcycle configurations, other accessories, and the features and intended use of this Saddlemen accessory, there are many different mounting options. You are responsible for the proper installation of this accessory on your motorcycle. Your attention to these installation instructions and recommendations will permit safe and proper use of this accessory. You must mount this accessory properly and securely before riding your motorcycle. If you lack the ability to safely and properly install this accessory, seek out a qualified motorcycle technician for assistance. During installation, support the motorcycle with a suitable stand or lift so it will not tip over and injure you, or damage the vehicle. Using or mounting this accessory improperly could result in a loss of control of the motorcycle which could result in damage to your motorcycle or other personal property, the property of third parties, and/or personal injury to yourself or others, up to and including death.

BE SURE TO THOROUGHLY READ AND CLOSELY FOLLOW THE MOUNTING INSTRUCTIONS THAT ARE INCLUDED WITH THIS ACCESSORY:

- The bag must be installed and securely fastened onto the seat or the rack of the motorcycle.
- Install the bag securely so it will not shift or move while riding. Make sure the mounting straps or the bag will not contact the wheels, suspension or any other moving parts of the motorcycle.
- If you do not understand the mounting instructions DO NOT mount the bag. Remove the mounting straps or any components you may have already installed on your motorcycle.
- Thoroughly inspect your motorcycle luggage before every ride. Do not use this bag if the mounting system has been modified, has deteriorated, loosened or is beginning to fail.
- Before riding, secure your cargo inside the bag and completely close any lid or flap.
- Continually check the security of the bag at each stop as you ride. Straps can loosen during operation, so be sure to check them frequently.
- Do not use this accessory if you have any doubts as to whether it is properly mounted to your motorcycle.
- Do not exceed 20 pounds of total weight of the bag and its contents.
- Do not transport or store flammable or potentially explosive materials in your bag.
- When using this accessory, do not exceed your vehicle's Maximum Gross Vehicle Weight as listed on your motorcycle or in the manufacturer's owner's manual.
- If your bag is ever damaged, do not use it until it has been inspected by your local professional motorcycle dealer. Replace the bag immediately if it has sustained damage that will prevent it from being properly secured to your motorcycle or being able to securely hold its contents.

DO NOT ATTEMPT TO USE THIS ACCESSORY IF:

- You do not understand these installation and use instructions,
- You do not understand any part of the accessory mounting system,
- You have any doubts as to the security of the mounting system.

If you have any concerns or questions, seek help at your qualified motorcycle dealer or call the Saddlemen support line at (310) 638-1222.

Remember: Motorcycling can be a dangerous activity. Installation of any accessory can increase your risk if it is not installed properly. You are responsible to install this accessory so it will not contact any portion of the drive train, suspension or steering, or if it will in any way interfere with the operation of your motorcycle.

PARTS INCLUDED WITH THE BACKREST, SEAT & SISSYBAR BAG:

Part	Qty.
Bag	1
Mounting harness (L)	1
Mounting harness (R)	1
Mounting harness straps	4
Pull down straps	4
Backrest pad (not shown)	1
Backpack strap	1
Padlock & keys (not shown)	1
Instruction set (not shown)	1



RECOMMENDED TOOLS:

Scissors to cut any excess mounting strap material (*Other tools may be required, depending upon your vehicle and bag mounting*)



The images in this instruction set may be different than your accessory or motorcycle.

Continued on next page...

INSTALLATION INSTRUCTIONS:

Your Saddlemen Backrest, Seat & Sissybar Bag has been designed to be mounted on a variety of motorcycles using the included mounting system options: a sissy bar mounting strap system, or a seat harness to attach the bag to a sissy bar, rear rack, or seat. You (or your professional motorcycle technician) will need to determine the best mounting configuration for your motorcycle or scooter.

SISSY BAR MOUNTING STRAP & SECURITY STRAPS:

Your bag has an adjustable rod mounting strap system which creates a sleeve ① that will allow you to slip the bag over your motorcycle's sissy bar. In most applications, the bag is commonly mounted behind the sissy bar where it can rest on a rear rack.

IMPORTANT:

Attaching the supplied security straps ② to solid mounting points is essential in order for the bag to stay attached to the motorcycle during rough riding conditions.

The default size of the inner mounting strap matches the width of most Harley-Davidson™ sissy bars equipped with a back rest pad. For these types of sissy bars, lift the retention flaps ③, pull out the two plastic mounting rods ④, remove the outer mounting strap cover ⑤, and expose and use just the inner mounting strap ⑥.

NOTE:

To adjust the inner mounting strap size and shape to other sissy bars, see the steps on page 3 of these instructions.

For your, or your passenger's riding comfort, a back rest pad is supplied with your bag that can attach to the hook & loop fastener strip on the mounting strap. To attach the pad ⑦, press it into place on the strap.

The bag ⑧ can also be mounted over the front of the sissy bar to rest on the passenger seat. Some riders elect this configuration so they can use the bag as a back rest.

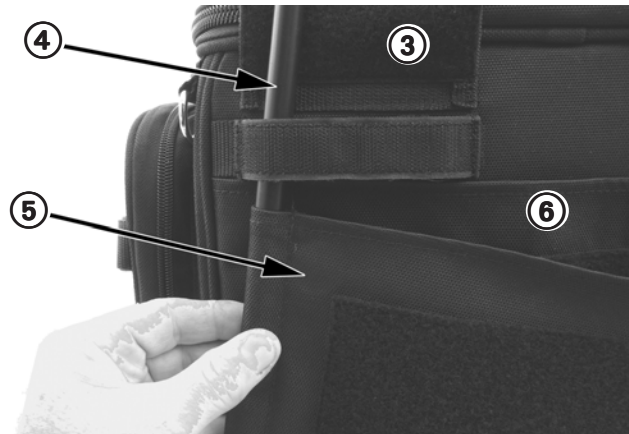
NOTE:

When mounting the bag in front of a sissybar, consider using the seat harness mounting method (see pages 4 and 5) with the bag mounted backwards on the passenger seat so the rider can use the supplied back rest pad.

IMPORTANT:

Regardless of how you orient the bag, attaching the supplied security straps ⑨ to solid mounting points on the chassis is essential for the bag to stay securely attached to the motorcycle during rough riding conditions. After installing the bag, cut off or secure any excess security strap material so it will not interfere with the motorcycle's controls, suspension, wheels or other components.

Do not mount the bag behind the sissy bar unless the motorcycle has a rear rack, as the bag could damage the rear fender and/or interfere with the motorcycle's lights, suspension, wheels or other components.



The images in this instruction set may be different than your accessory or motorcycle.

Continued on next page...



SISSY BAR MOUNTING STRAP ADJUSTMENT:

Your bag has an adjustable rod mounting strap system which creates a sleeve that allows you to slip the bag over your motorcycle's sissy bar. The bag has upper ① and lower loops ② to hold the rods ③ so you can adjust how the mounting strap ④ will fit onto your motorcycle's sissy bar and pad.

IMPORTANT:

Make sure the rods ③ are inserted into both the upper ① and lower ② loops on the bag when you are adjusting the size of the mounting strap. After putting a rod into both the upper and lower loops and the mounting strap loop, make sure the rod flap ⑤ is pressed down, to full engage the hook & loop fasteners. The security straps attach to the upper or lower D-rings ⑥ located on each corner of the bag.



VERY WIDE SISSY BAR MOUNTING SUGGESTION:

To set the mounting strap for the widest sissybar, lift the retention flaps ⑤, pull out the two plastic mounting rods ③, and remove the outer mounting strap cover to expose and use just the inner mounting strap ④.



WIDE SISSY BAR MOUNTING SUGGESTION:

Set the rods ③ through the outer loops ① and ② on the back of the pack and the mounting strap ④ to create a sleeve that snugly fits around a wide sissy bar and pad.



NARROW SISSY BAR MOUNTING SUGGESTION:

Set the rods ③ through the inner loops ① and ② on the back of the bag and the mounting strap ④ to create a sleeve that snugly fits around a narrow sissy bar and pad.



TAPERED SISSY BAR MOUNTING SUGGESTION:

To set the shape of the mounting strap sleeve to fit a tapered or an angled sissy bar, set the rods through the inner loops ① and the outer loops ② on the back of the bag and the mounting strap ④ to create a triangular sleeve that matches your sissy bar and pad.



OUTER MOUNTING STRAP PROTECTIVE COVER:

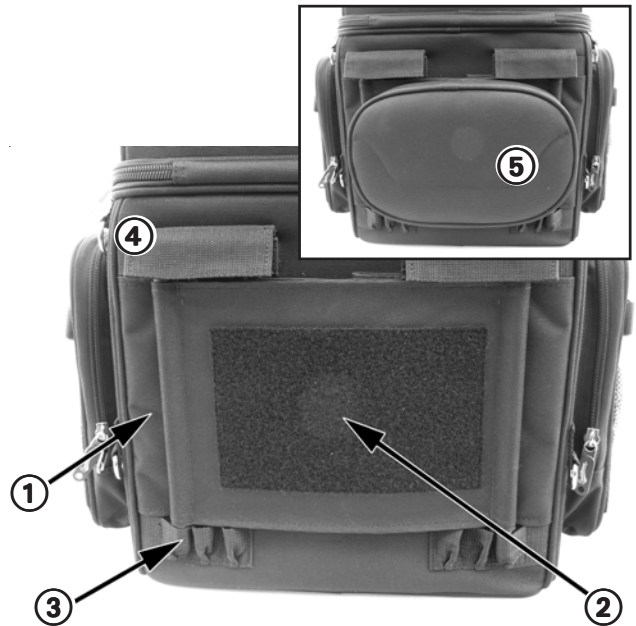
If you are not using the mounting strap to create a sleeve to attach your bag to a sissybar, cover and protect the inner mounting strap ① with the outer protective strap ②. Route the adjustment rods through the outer protective cover and into the outer adjustment loops ③ on the back of the bag.

IMPORTANT:

Make sure the rods are properly inserted into both the upper and lower loops ③ on the bag when you installing the outer mounting strap protective cover. After installing the rods and strap, make sure the rod flap ④ is pressed down, securing its hook & loop fasteners.

NOTE:

Make sure to have the hook & loop fastener side of the protective cover facing outwards if you plan to use the supplied back rest pad ⑤.



SEAT MOUNTING HARNESS & SECURITY STRAPS:

The Saddlemen Backrest, Seat & Sissybar Bag is supplied with an under seat mounting harness and strap system that enables you to securely mount your bag to your motorcycle. This system will hold your bag in place better than using straps or elastic cords alone.

Remove the seat from your motorcycle. Set the left side ⑥ of the mounting harness with the right side ⑦ of the harness on the top of the rear fender.

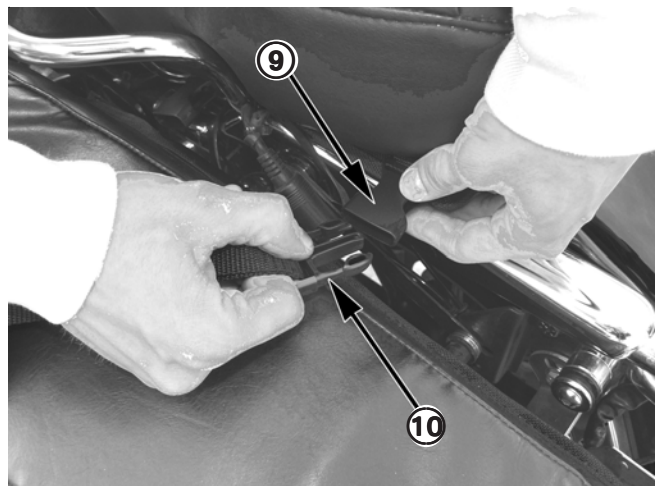
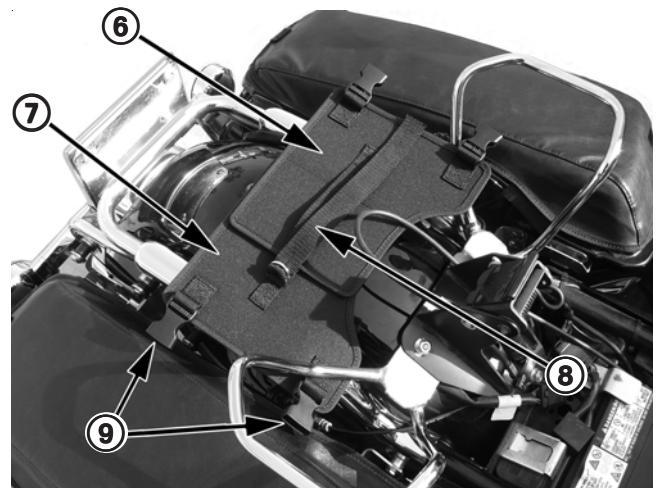
NOTE:

The "UP" side of the harness halves are connected with a D-ring and adjustment strap ⑧. Keep this side up, towards the seat, to prevent damaging the finish on the fender.

Adjust the width of the connected harness halves using the adjusting strap ⑧ and the hook and loop fasteners on each mounting harness. Set the width of the harness so the four female quick release buckles ⑨ will protrude just past the edge of the seat (after it is reinstalled).

Reinstall the seat.

Connect the male, quick release ends ⑩ of the security straps to the female buckles ⑨. The other end of the four security straps are equipped with metal, quick release hasps that will connect to D-rings on the bag.



The images in this instruction set may be different than your accessory or motorcycle.

Continued on next page...

SEAT MOUNTING HARNESS & SECURITY STRAPS (continued):

Set the bag onto the seat and connect the metal hasp end (11) of the security straps to the D-rings on each corner of the bag. Cinch the straps to tighten the bag to the seat. Secure any loose or extra strap material.

NOTE:

Connecting the straps to the four upper D-rings on the bag will aid in the stability of the bag on the seat.

IMPORTANT:

When removing the bag, disconnect the lower side release buckles so that the straps are removed with the bag. Do not operate the motorcycle if the straps are still in place after removing the bag, as the straps could interfere with the safe operation of the vehicle.

NOTE:

If you plan to use the bag as a back rest, install the bag "backwards" on the seat so you can attach the back rest pad (12).

IMPORTANT:

Make sure the bag does not block or touch the vehicle's tail light, turn signals, fender, suspension, wheels, or other components. Do not mount the bag near hot surfaces, such as the motorcycle's exhaust. Cut off or secure any excess security strap material so it will not interfere with the motorcycle's controls, suspension, wheels or other components.



STORAGE COMPARTMENTS & POCKETS:

Your Saddlemen Backrest, Seat & Sissybar Bag has several internal and external storage compartments that enable you to carry all of your cargo in a safe and organized fashion.

- ① Rain cover storage compartment
- ② Upper storage pocket (zipper access)
- ③ Upper, outer elastic mesh pocket
- ④ Upper storage compartment flap (release buckles ⑤ and unzip to access)
- ⑤ Two upper storage compartment flap retention buckles
- ⑥ Main storage compartment (unzip to access)
- ⑦ Two side storage pockets (expandable, unzip to access)
- ⑧ Two side outer elastic mesh pockets (with retention straps)
- ⑨ Organizer pocket (unzip to access)

Not visible:

- Inner, padded helmet storage in main compartment
- Inner, padded laptop storage sleeve in main compartment
- Inner, zipped mesh storage pocket in main compartment
- Inner, mesh storage sleeves inside of side storage pockets



The images in this instruction set may be different than your accessory or motorcycle.

Continued on next page...

RAIN COVER:

Use the supplied rain cover to help protect the bag during inclement weather. The cover ① is stored in the top compartment of the bag. Unzip the compartment ② and remove the cover.

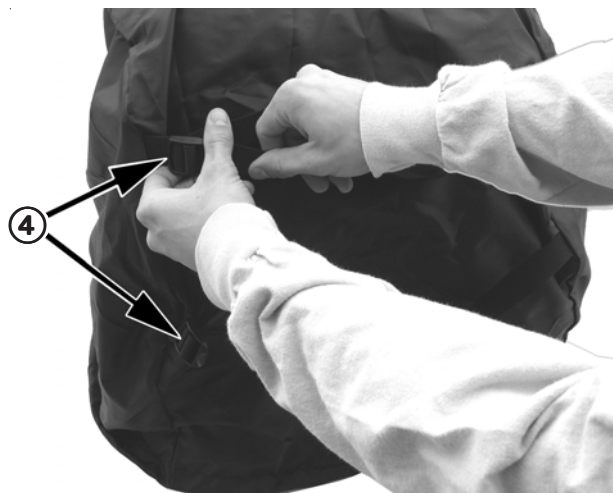


On the inside, top of the rain cover is a tether strap. This strap is required to help secure the cover to the bag when riding.

Invert the cover (the outside of the cover has two straps to cinch it to the bag) and loop the tether strap into the buckle ③ in the cover's storage compartment.



After you have attached the tether strap, slide the cover over the bag. The cover has two cinch straps ④ that will tighten the cover so it fits snugly to the sides of the bag to prevent the rain cover from flapping under most riding conditions. The cinch straps can also be used as security straps, depending upon your mounting configuration.



To seal the base of the rain cover, cinch the cord ⑤ at the base of the cover. You can attach the two rain cover cinch straps ④ to a solid item (such as a grab rail) on the motorcycle to prevent the cover from billowing or coming off of the bag as you ride.

IMPORTANT:

Cut off or secure any excess rain cover cinch/security strap or cord material so it will not get drawn into, or interfere with the motorcycle's controls, suspension, wheels or other components.



The images in this instruction set may be different than your accessory or motorcycle.

Continued on next page...

UPPER & SIDE EXTERNAL STORAGE POCKETS:

Your Saddlemen Backrest, Seat & Sissybar Bag has five external storage pockets and three external, elastic mesh pockets to provide you quick access to some of your belongings.

Access the upper storage pocket ① by unzipping ② the flap.

There is a mesh pocket ③ on the upper storage pocket flap.



The two expandable side pockets are accessed by opening one of the two sets of zippers on each pocket.

The outer zipper ④ opens and closes the side pocket to its standard size.

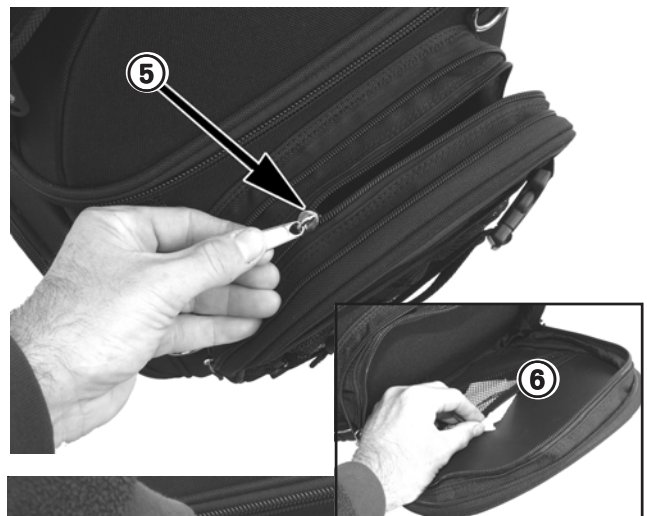


The inner zipper ⑤ opens and closes the side pocket to its expanded size.

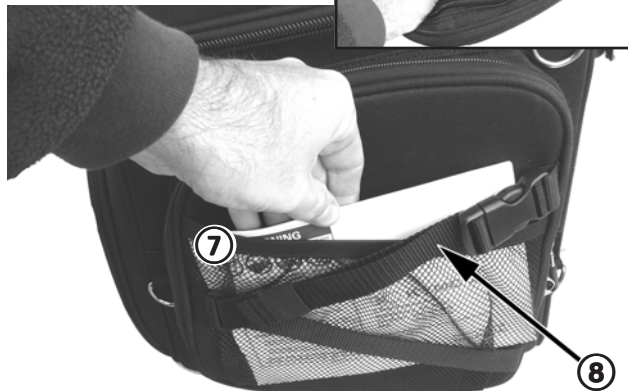
NOTE:

You only need to use one of the two zippers to close the side storage pocket.

There is an elastic storage sleeve ⑥ on the inside of each side storage pocket.



There is an elastic mesh pocket ⑦ on the outside of the two side storage pockets. Each mesh pocket has an additional security strap and buckle ⑧ so you can cinch down the objects you place in the pocket.



IMPORTANT:

Items you place in the mesh pockets will not be protected from the elements and are visible to others. Cut off or secure any excess security strap material so it will not get drawn into, or interfere with the motorcycle's controls, suspension, wheels or other components.



The images in this instruction set may be different than your accessory or motorcycle.

Continued on next page...

EXTERNAL STORAGE & ORGANIZER POCKET:

Your bag has an external organizer storage pocket with special holders to separate and secure items such as a cellular telephone, writing implements, cards and maps.

Access the organizer storage pocket ① by unzipping ② the flap.

NOTE:

You can use the supplied mini-padlock to lock the zipper fobs together to prevent access to the organizer storage pocket or other compartments.



The inside of the organizer storage pocket can hold items such as a cellular telephone or MP3 player ③, pens or pencils, and cards.

NOTE:

There is a elastic storage sleeve ④ on the inside of each side storage pocket.

Also included in the organizer is a clip ⑤ to hold a set of keys.



UPPER STORAGE COMPARTMENT:

The bag has a padded, upper storage compartment that is secured by a zippered flap and a cover that is secured by two quick-release buckles on adjustable straps

Access the upper storage compartment by releasing the two quick release buckles ⑥, lifting the lid back and unzipping the flap ⑦ (hidden).



Lift the flap ⑧ back to expose the upper storage compartment ⑨.



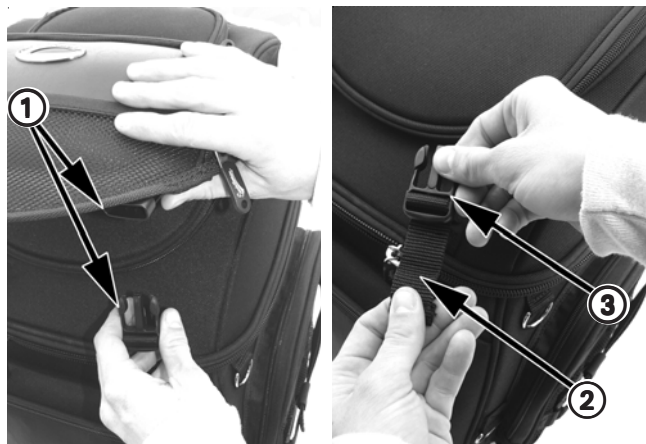
SECURING APPAREL UNDER THE UPPER STORAGE COMPARTMENT LID:

You can use the upper storage compartment lid to hold a jacket or another piece of apparel (like a wet rain suit that you to store separate from your other things).

Disconnect the two quick release buckles ①.

Slide back the elastic retainer band from the surplus strap material and adjust the length of the strap that is looped through the male end of the buckle.

Adjust the length of the straps so when you close the lid and reconnect the buckles, the apparel ④ is held securely under the upper compartment lid ⑤.



MAIN STORAGE COMPARTMENT:

The main storage compartment is padded to protect the cargo placed inside. The compartment can hold a full-face type helmet and has an additional padded laptop computer sleeve.

NOTE:

You can use the supplied mini-padlock to lock the zipper fobs together to prevent access to the storage compartment.

To access the main storage compartment, unzip the main zipper ⑥ that goes around the center of the bag. Once the zipper is completely open, the top half of the bag ⑦ will swing open.

The top section of the bag will be open at a 90-degree angle limited by side panels ⑧ that connect the upper and lower section of the bag.

NOTE:

See page 10 for information on how to disconnect the panels and open the top section of the bag to a full 180-degrees.

There is an elastic mesh pocket ⑨ secured by a zipper in the bottom of the upper section of the bag.



MAIN STORAGE COMPARTMENT (continued):

When placing a helmet ① inside of the main compartment, set it with the base of the helmet at the bottom of the compartment.

NOTE:

If you are going to have other objects in the main compartment with your helmet, place your helmet in a bag to protect it's finish.



When placing a laptop computer ② in the protective sleeve ③, lower it into place gently. Secure the laptop into the sleeve with the retention strap that connects to the sleeve with a hook and loop fastener strip (see item ⑥ in the image at the bottom of this page).



To open the upper section of the bag's main compartment beyond the standard 90-degree angle, disconnect the side panels ④ by unzipping the zippers connecting the panels to the lower section of the bag.



With the upper section of the bag ⑤ open to a full 180-degrees, it can be used as a temporary table.

NOTE:

The laptop retention strap ⑥ is visible in this image.



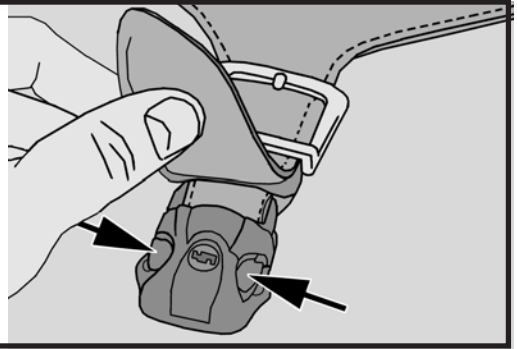
The images in this instruction set may be different than your accessory or motorcycle.

Continued on next page...

LOCKING, QUICK-RELEASE BUCKLES:

Certain versions of the BR1800 Tail Bag, but not all versions, are equipped with quick release clasps under the conventional metal buckles and straps. The quick release clasps can also be locked for additional security (use the supplied key to lock and unlock the quick release clasp).

To release the clasps, use your index finger and thumb to press inward on the sides of the male tab. The clasp must be unlocked to allow the male tab to slide out of the female portion of the clasp.



TAKING YOUR BAG WITH YOU AFTER YOU STOP:

Your Saddlemen Backrest, Seat & Sissybar Bag is equipped with a rugged carrying handle and includes a strap you can attach to carry the bag over your shoulder or as a backpack.

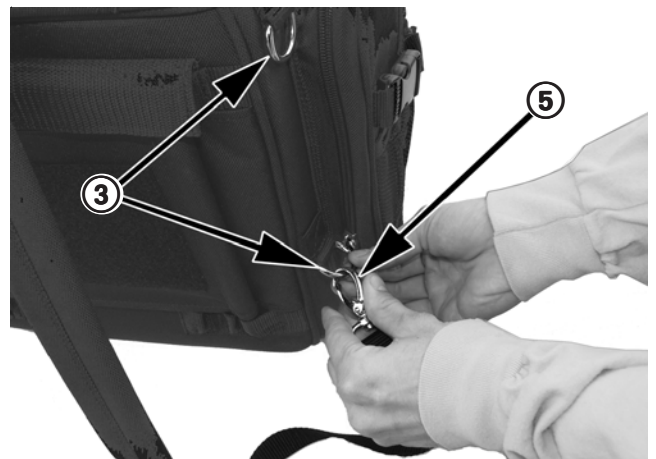
- ① Upper backpack strap D-ring
- ② Carry handle
- ③ Upper and lower bag D-rings



To use the backpack strap, connect the metal hasp in the center of the strap ④ to the upper backpack strap D-ring ①.



Complete connecting the backpack strap using the metal hasps at the ends of the strap ⑤ to the upper or lower bag D-rings ③.



TAKING YOUR BAG WITH YOU AFTER YOU STOP (continued):

NOTE:

Use the adjustment buckles on the backpack strap ⑥ to find the length of the strap to the length that will be the most comfortable for when you carry your bag.

You can create other carrying configurations by connecting the backpack strap to any of the bag's D-rings.



IMPORTANT:

Failure to install this accessory properly may allow portions of the bag or its mounting materials to contact the vehicle's moving parts. It is vital that you verify that the accessory and/or any of its parts will not touch, or interfere with other components while the suspension moves through its entire stroke.

Make sure that your Backrest, Seat & Sissybar Bag does not touch the exhaust or other non-moving components, as well, as they may be damaged from contact with the accessory.

Occasionally, the configuration of this accessory with certain motorcycles may require relocation and/or adjustment of certain components on the vehicle. Check to be sure that all lights and safety reflectors are visible once the bag is in place. If the bag blocks any side reflectors, place reflectors on the exterior sides of the bag (reflectors with self-adhesive backing are available from motorcycle or automobile supply stores). It is your responsibility to make sure the installation does not create an unsafe or illegal situation.

After 50 miles (80 kilometers), recheck all of the mounting straps and the bag to make sure they are still tight and secure. Inspect the bag and related hardware before and during each ride. A loose bag or hardware can interfere with the vehicle's operation and cause an unsafe riding condition.



CARE OF YOUR SADDLEMEN BAG:

Your Saddlemen Backrest, Seat & Sissybar Bag requires almost no maintenance, other than periodic cleaning.

Use Saddlemen Seat & Saddlebag Ultra Wash (#3101) for the best results while cleaning, or use mild soap and water.

Protect the finish and enhance the appearance of your bag with Saddlemen's Seat & Saddlebag Fabric Conditioner (#3103).



SADDLEMEN LIMITED ONE-YEAR WARRANTY

Saddlemen warrants its products for defects in materials, design or workmanship for a period of one year after retail purchase. Items that are defective will be repaired or replaced by Saddlemen at its sole discretion. Damage caused by improper use or improper installation is not a defect; therefore repair or replacement of a damaged accessory will not be covered under this warranty. This warranty contains other provisions and conditions, so please visit www.saddlemen.com for additional information. Thank you for purchasing your new Backrest, Seat & Sissybar Bag. You can count on Saddlemen's quality, innovation, service and style. We want you to be completely satisfied. If you have any comments, or are not satisfied with the performance of your Saddlemen accessory, please contact the Saddlemen support line at (310) 638-1222.

