



TRUFLO™

HIGH VELOCITY AIR CLEANERS

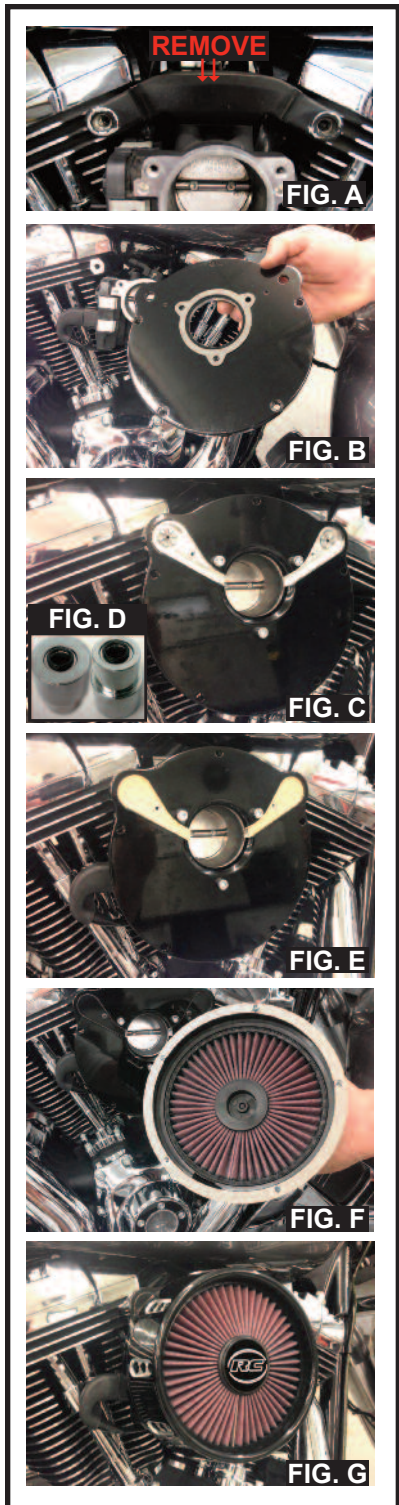
ASSEMBLY INSTRUCTIONS

1993 & UP HARLEY DAVIDSON BIG TWIN MODELS
1991 & UP XL SPORTSTER MODELS

Note: Fuel injected models may require recalibration of the ECM for the best performance.
(Use the **RCX-Celerator Closed Loop Fuel Management System** or other programmer)

Note: Use blue Loctite on all fasteners during assembly.

1. Remove the existing air cleaner. (Refer to the HD service manual if necessary)
Note: 1991 & Up XL Models & 1993-1999 Big Twin require the use of the supplied breather bolt adapters (Refer to page 2 for breather bolt adapter installation instructions)
Note: Some models are equipped with a throttle body bracket, it must be removed before installation. (see Fig. A)
2. Remove adhesive back from supplied throttle body gasket and attach to backside of base plate. (see Fig. B)
3. Insert supplied breather bolts with washers into the baseplate. (see Fig. C) Insert 4 supplied small o-rings into grooves on the front and backside of each breather bolt stand off. (see Fig. D) - do not tighten
4. Attach base plate assembly to throttle body using the 3 supplied 1/4-20x1-1/4" bolts. (see Fig. E)
5. Torque breather bolts to 20 ft-lbs and the throttle body bolts to 8 ft-lbs.
6. Insert paper gaskets into each breather bolt port located on the front side of backing plate. (see Fig. E)
7. Attach breather bolt covers to the base plate using the 2 supplied 8-32x3/8" screws.
8. Insert faceplate gasket onto the indexing pin located on the backside of the faceplate. (see Fig. F)
9. Place face plate cover onto the base plate. - Indexing pin must be located at the 12:00 position.
10. Insert the 4 supplied 12 point -1/4-20x1" bolts through the backside of the base plate to attach the faceplate to the base plate. A 1/4 boxed end 12 point wrench or socket can be used to tighten bolts.
11. When you install a performance air cleaner, the air flow changes and can lead to an incorrect air/fuel ratio. So you need a fuel management system that will correct this ratio and keep your engine running smooth and efficient. We recommend using the **RCX-Celerator Closed Loop Fuel Programmer**. This unit is "Plug & Play" and this unit learns and tunes your bike as you ride. See more information by visiting www.rccomponents.com



373 Mitch McConnell Way • Bowling Green, KY 42101 • 1-800-360-0915
www.rccomponents.com





TRUFLO™

HIGH VELOCITY AIR CLEANERS

THREADED BREATHER BOLT INSERTS

1991 & UP HARLEY DAVIDSON SPORTSTER XL MODELS
1993 - 1999 BIG TWIN MODELS

THREADED BOLT INSERTS ARE ONLY REQUIRED ON 1991 & Up XL Models & 1993-1999 BIG TWIN MODELS

1. Thread supplied 3/8x16 nut onto breather bolt. (see Fig. G)
2. Thread supplied breather bolt insert onto breather bolt. (see Fig. H)
3. Hand tighten 3/8x16 nut against breather bolt insert. (see Fig. H)
4. Fully seat breather bolt assembly into cylinder head by using a 9/16" wrench and turning the 3/8x16 nut. (see Fig. I)
5. To remove the breather bolt use a 9/16" wrench to hold breather bolt head while loosening the 3/8x16 nut with a second 9/16" wrench. Unscrew breather bolt from breather bolt insert, remove 3/8x16 nut. (see Fig. J)
6. Repeat the above steps to install the second breather bolt insert into the second cylinder head.

For questions regarding the installation of this product, please contact our tech service department at: 1-800-360-0915 ext 430:
or email to: tech@rccomponents.com

FUEL MANAGEMENT

RC Components is taking the guesswork out of tuning!

Now that you have installed an Airstrike Air Cleaner, your next step should be fuel management. When you install a performance air cleaner, the air flow changes and can lead to an incorrect air/fuel ratio. So you need a fuel management system that will correct this ratio and keep your engine running smooth and efficient.

The **RCX-Celerator** is the best of the best in fuel management! It is a full closed loop system which is the same technology used by today's major auto and motorcycle manufacturers. No programming, No adjustments, No downloads. Just plug it in and ride, it is that easy! The RCX-Celerator automatically detects and adjusts for changes in load, RPM, temperature, elevation and engine modifications. So no matter where you travel your bike will always be running it's best. For more information visit www.rccomponents.com.



No Downloads • No DynoTuning • No Adjustments • Self tunes as you ride • Quicker throttle response



373 Mitch McConnell Way • Bowling Green, KY 42101 • 1-800-360-0915
www.rccomponents.com



FIG. G



FIG. H



FIG. I



FIG. J



FIG. K



TRUFLO™

HIGH VELOCITY AIR CLEANERS

PARTS LIST

Fits 2008 & Up FL Touring & HD Trike models with throttle by wire.

Part# **ACX-01C, ACX-01B**

Fits 1993 & Up Big Twin Models

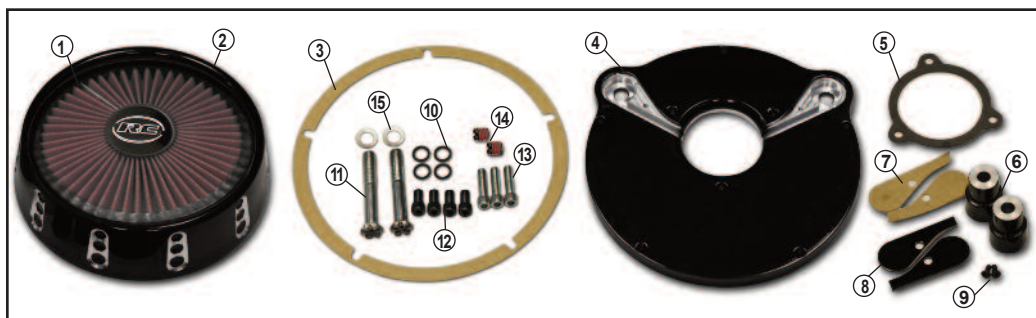
(excludes 1999-2001 FL Models w/ M&M injection and 08 & Up FL Touring models with throttle by wire)

Part# **ACX-02C, ACX-02B**

Fits 1991 & Up Sportster XL Models

Part# **ACX-03C, ACX-03B**

ITEM#	DESCRIPTION	PART #	QTY.
1	face plate	ACX-XXX	1
2	air cleaner	SP-3562	1
3	face plate gasket	AC-GASKET5	1
4	base plate	AC-BPXX	1
5	gasket	ZTRB-0088	1
6	stand-offs	AC-STNDOFF	2
7	breather bolt gasket	AC-GASKET1	2
8	breather bolt covers	AC-BB COVER	2
9	breather bolt cover screws, 8-32x3/8	F08-32-3/8BLK	2
10	small o-rings	ZTRB-0089	4
11	breather bolts, 3/8-16x2-1/2	AC-B BOLT	2
12	bolts, 1/4-20x3/4 12 pt. Black	F04-20-06-12PB	4
13	bolts, 1/4-20x1	F04-20-08SHZ	3
14	threaded inserts, 1/2-13 to 3/8-16	319-6	2
15	3/8 washers, ss	F06-00-375SS	2



373 Mitch McConnell Way
Bowling Green, KY 42101
1-800-360-0915 • www.rccomponents.com