

# AIRSTRIKE™

## HIGH VELOCITY AIR CLEANER

### ASSEMBLY INSTRUCTIONS

1993 & UP HARLEY DAVIDSON BIG TWIN MODELS  
1991 & UP XL SPORTSTER MODELS

**Note:** Fuel injected models may require recalibration of the ECM for the best performance.  
(Use the **RCX-Celerator** Closed Loop Fuel Management System or other programmer)

**Note:** Use blue Loctite on all fasteners during assembly.

1. Remove the existing air cleaner. (Refer to the HD service manual if necessary)  
**Note:** 1991 & Up XL Models & 1993-1999 Big Twin require the use of the supplied breather bolt adapters (Refer to page 2 for breather bolt adapter installation instructions)  
**Note:** Some models are equipped with a throttle body bracket, it must be removed before installation. (see Fig. A)
2. Remove adhesive back from supplied gasket and attach to backside of base plate. (see Fig. B)
3. Insert supplied breather bolts with washers and standoffs with the 4 supplied small o-rings onto baseplate. (see Fig. C) (small o-rings go into grooves on the front and backside of breather bolt standoffs)(see Fig. D)
4. Tighten breather bolts to 20 ft-lbs.
5. Insert paper gaskets into each breather bolt port behind velocity stack.(see Fig. E)
6. Attach velocity stack to base plate using the 3 supplied 1/4-20x1-1/4" bolts. (see Fig. E) -do not tighten
7. Attach breather bolt covers to the base plate using the supplied 8-32x3/8" bolts.  
**Note:** Velocity stack **can not** be tightened until breather bolt covers are in place.
8. Tighten throttle body / Velocity stack bolts to 8 ft-lbs.
9. Place accent plate onto air filter (chrome or black side up).
10. Place face plate cover onto air filter and accent plate assembly. (see Fig. F)
11. Using the 5 supplied 1/4-20x2-1/2" bolts and spacers attach air filter assembly to base plate.  
*Tip:* start with the top bolt and spacer to hold air filter assembly in place while installing.
12. Tighten face plate cover bolts to 8 ft-lbs.
13. When you install a performance air cleaner, the air flow changes and can lead to an incorrect air/fuel ratio. So you need a fuel management system that will correct this ratio and keep your engine running smooth and efficient. We recommend using the **RCX-Celerator Closed Loop Fuel Programmer**. This unit is "Plug & Play" and this unit learns and tunes your bike as you ride. See more information by visiting [www.rccomponents.com](http://www.rccomponents.com)

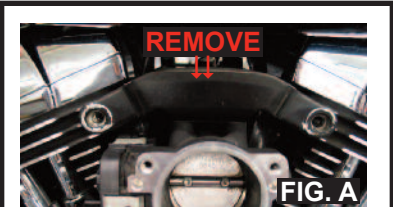


FIG. A

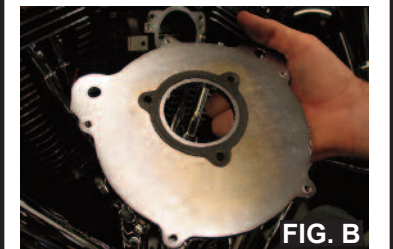


FIG. B

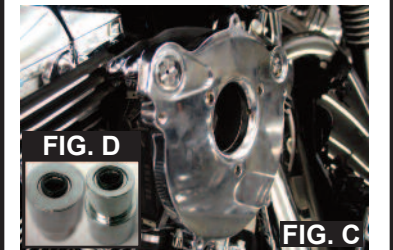


FIG. C

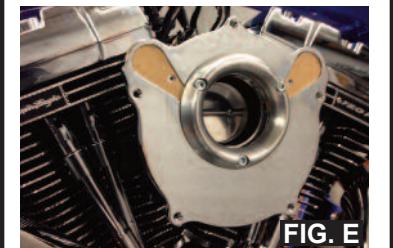


FIG. E

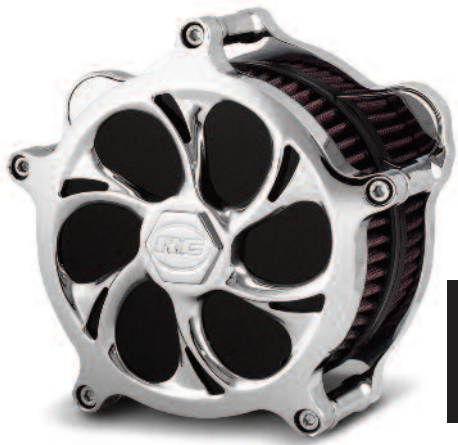


FIG. F



373 Mitch McConnell Way • Bowling Green, KY 42101 • 1-800-360-0915  
[www.rccomponents.com](http://www.rccomponents.com)





**THREADED BREATHER BOLT INSERTS**  
 1991 & UP HARLEY DAVIDSON SPORTSTER XL MODELS  
 1993 - 1999 BIG TWIN MODELS

**THREADED BOLT INSERTS ARE ONLY REQUIRED ON 1991 & Up XL Models & 1993-1999 BIG TWIN MODELS**

1. Thread supplied 3/8x16 nut onto breather bolt.(see Fig. G)
2. Thread supplied breather bolt insert onto breather bolt. (see Fig. H)
3. Hand tighten 3/8x16 nut against breather bolt insert.(see Fig. H)
4. Fully seat breather bolt assembly into cylinder head by using a 9/16" wrench and turning the 3/8x16 nut. (see Fig. I)
5. To remove the breather bolt use a 9/16" wrench to hold breather bolt head while loosening the 3/8x16 nut with a second 9/16" wrench. Unscrew breather bolt from breather bolt insert, remove 3/8x16 nut. (see Fig. J)
6. Repeat the above steps to install the second breather bolt insert into the second cylinder head.

For questions regarding the installation of this product, please contact our tech service department at: 1-800-360-0915 ext 430:  
 or email to: [tech@rccomponents.com](mailto:tech@rccomponents.com)



FIG. G



FIG. H



FIG. I



FIG. J



FIG. K

**FUEL MANAGEMENT**

**RC Components is taking the guesswork out of tuning!**

Now that you have installed an Airstrike Air Cleaner, your next step should be fuel management. When you install a performance air cleaner, the air flow changes and can lead to an incorrect air/fuel ratio. So you need a fuel management system that will correct this ratio and keep your engine running smooth and efficient.

The **RCX-Celerator** is the best of the best in fuel management! It is a full closed loop system which is the same technology used by today's major auto and motorcycle manufacturers. No programming, No adjustments, No downloads. Just plug it in and ride, it is that easy! The RCX-Celerator automatically detects and adjusts for changes in load, RPM, temperature, elevation and engine modifications. So no matter where you travel your bike will always be running it's best. For more information visit [www.rccomponents.com](http://www.rccomponents.com).

**No Downloads • No DynoTuning • No Adjustments • Self tunes as you ride • Quicker throttle repsonse**

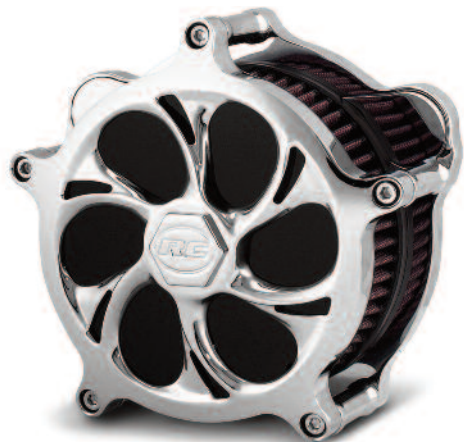


C.A.R.B Approved



373 Mitch McConnell Way • Bowling Green, KY 42101 • 1-800-360-0915  
[www.rccomponents.com](http://www.rccomponents.com)





# AIRSTRIKE™

## HIGH VELOCITY AIR CLEANER

### PARTS LIST

Fits 2008 & Up FL Touring & HD Trike models with throttle by wire.

Part# **AC-01C, AC-01B**

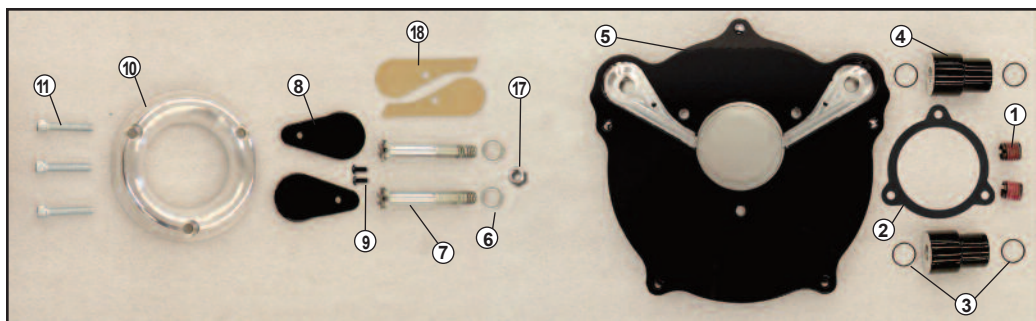
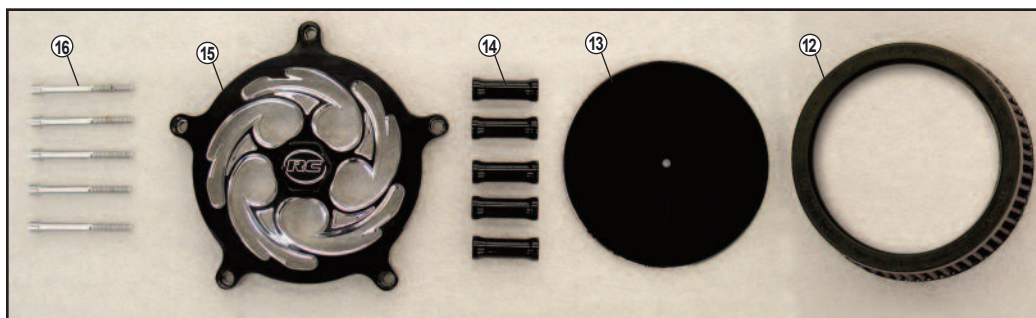
Fits 1993 & Up Big Twin Models

(excludes 1999-2001 FL Models w/ M&M injection and 08 & Up FL Touring models with throttle by wire)

Part# **AC-02C, AC-02B**

Fits 1991 & Up Sportster XL Models

Part# **AC-03C, AC-03B**



ITEM#	DESCRIPTION	PART #	QTY.
1	threaded inserts, 1/2-13 to 3/8-16	319-6	2
2	gasket	ZTRB-0088	1
3	small o-rings	ZTRB-0089	4
4	stand-offs	AC-STNDOFF	2
5	base-plate	AC-BPX	1
6	3/8 washers, ss	F06-00-375SS	2
7	breather bolts, 3/8-16x2-1/2	AC-B BOLT	2
8	breather bolt covers	AC-BB COVER	2
9	breather bolt cover screws, 8-32x3/8	F08-32-3/8BLK	2
10	velocity stack	AC-VS	1
11	bolts, 1/4-20x1-1/4	F04-20-10SHZ	3
12	air filter	HD0818	1
13	accent plate	AC-AP-BC	1
14	cover spacers	AC-PSTCOVER	5
15	cover	AC-XXX	1
16	cover bolts	F04-20-20SHC	5
17	3/8x16 hex nut		1
18	breather bolt cover gasket	AC-GASKET1	2



373 Mitch McConnell Way  
Bowling Green, KY 42101  
1-800-360-0915 • www.rcomponents.com

INST-AC1