

THANK YOU FOR
YOUR CHOICE

OBD Electric Side Step Installation guide



for Mercedes Benz
G-Class (2019)



 www.dmpcardesign.com

 [dmpcardesign](https://www.instagram.com/dmpcardesign)

 www.facebook.com/dmpcardesign

II. Function Description

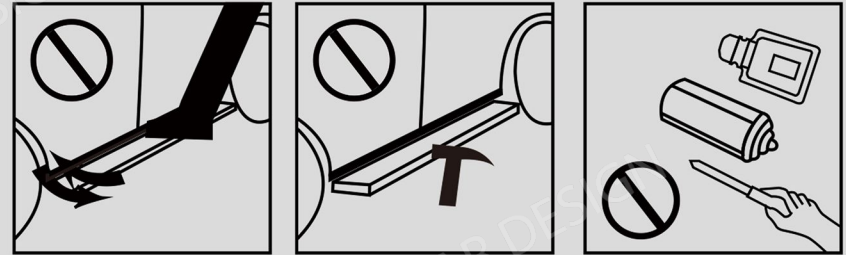
1. When the vehicle is stationary and any door is opened, the running board on that side extends. When the door is closed, the running board retracts.
2. If the running board encounters an obstacle or pinches a person while retracting, the control unit automatically activates the anti-pinch function. The board stops moving until a new command is received.

III. Operating Environment and Precautions

1. Our running boards are waterproof and can be used normally in rain, dust, or harsh weather.
2. Our motors are rigorously tested and operate well from -40°C to $+50^{\circ}\text{C}$. **Note:** If ice forms on the brackets, knock it off before use. Otherwise, excessive motor torque may shorten the motor's lifespan.
3. The control box is the main component of the electric running board system. If the control box malfunctions, the step system may fail. In that case, open the front hood, disconnect the control box, and take it to an authorized service center for repair or replacement.
4. If you notice the running board vibrating while extending/retracting, immediately check for loose bolts to prevent safety hazards.

I. Features

1. This product is an intelligent system that controls the extension and retraction of the running boards via a smart control system.
2. This product extends to make getting in and out of the vehicle easier. The step surface has anti-slip strips, and the motor has an automatic anti-pinch function for added safety.
3. The motor draws power from the vehicle's battery and is not connected to any other electrical components, avoiding any impact on the vehicle's other electrical systems.



- Do not step on the running board while it is extending or retracting.
- Do not disassemble the motor or control box by yourself.

Safety Precautions

To ensure safe use and avoid injury or property damage to yourself or others, please follow these safety precautions. Failure to do so may lead to accidents.

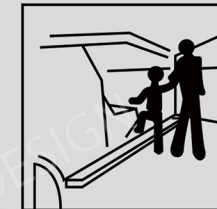
- Children and persons with disabilities should only use this product under supervision.
- This running board is not a toy for children.
- The control box has been connected to the vehicle's system. Do not perform a PDI (Pre-Delivery Inspection) after installation.



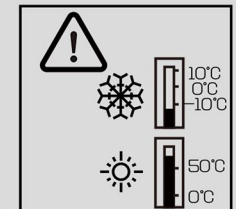
In extremely harsh weather conditions such as freezing, earthquakes, floods, etc., it is recommended to turn off the electric running board.



Do not put your hand between the running board and the vehicle when the board is retracting.



Children should use the electric running board only under adult supervision.



The product operating temperature range is -40°C to 70°C . If the ambient temperature exceeds this range, please turn off the electric running board.

Part IV: Wiring Diagram

2
step



Remove the left footwell trim panel and locate the CAN bus wires.

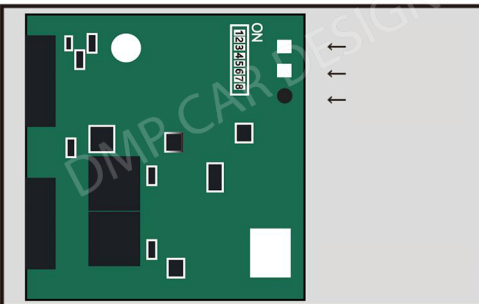
3
step



19G500

Follow the wiring diagram: connect red wire to red, black wire to black. Open the control box and check if the signal indicator light turns on. The signal indicator (LED2) blinking means signal and power are normal. If pairing fails, check if DIP switch 247 is set to CAN mode.

4
step

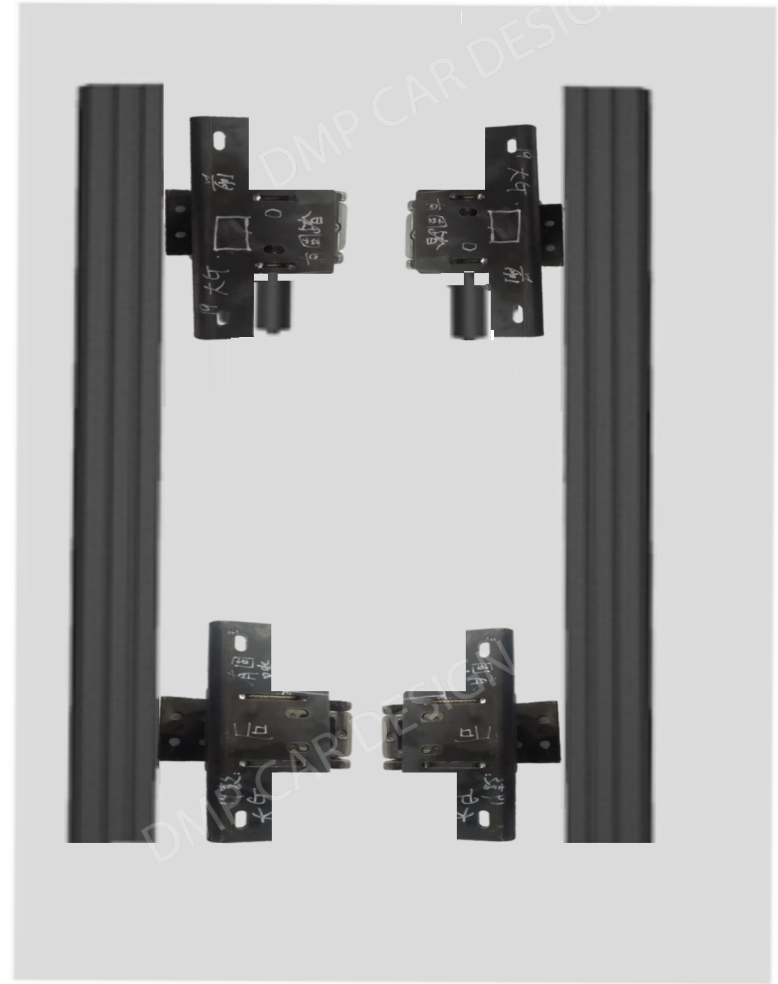


Press and hold the reset switch to pair. Both indicator lights will blink 4 times simultaneously. Then open a door – LED2 blinks, LED1 stays solid. Pairing is successful.

OBD Electric Side Step Parts List

*All images in this manual are for reference only. Actual product may differ in appearance, but installation method is the same.

Parts Package



*All images in this manual are for reference only. Actual product may differ in appearance, but installation method is the same.

Parts Package / Parts List



M8 stainless steel washer
- 12 pcs



M8 spring washer
- 12 pcs



M8 nut
- 12 pcs



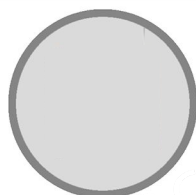
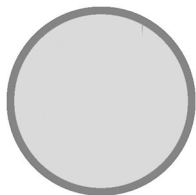
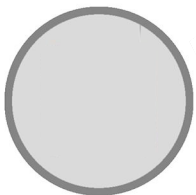
U-shaped washer
- 16 pcs



6x20x60 T-hook
- 8 pcs



5x15x45 T-hook
- 4 pcs



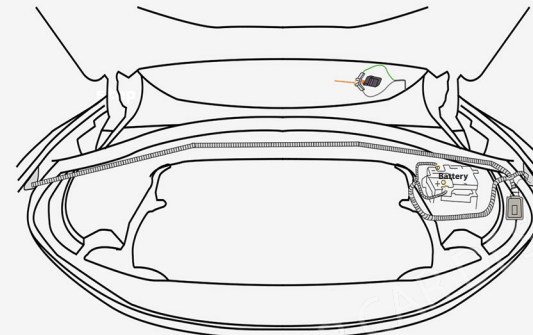
Part 2: Chassis Diagram



Install the integrated bracket by locating the corresponding mounting holes in the chassis as shown in the diagram.

(Note: The front/rear and left/right positions must not be reversed; otherwise, unnecessary malfunctions will occur.)

Part 3: Wiring Diagram

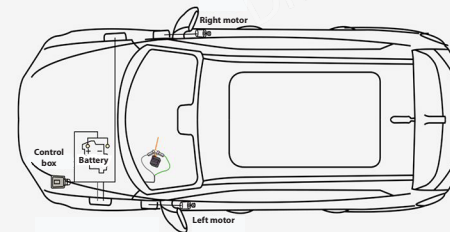


Route the wiring harness through the engine compartment as shown in the diagram.

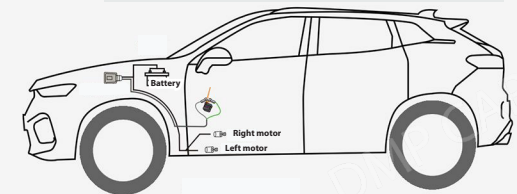
Secure the control box on the side of the engine compartment with a large zip tie.

Connect the positive and negative terminals to the vehicle battery for power.

(Note: Do not route the wiring harness near the engine or around hot areas to avoid high temperature damage.)



Wiring — Top view



Wiring — Side view