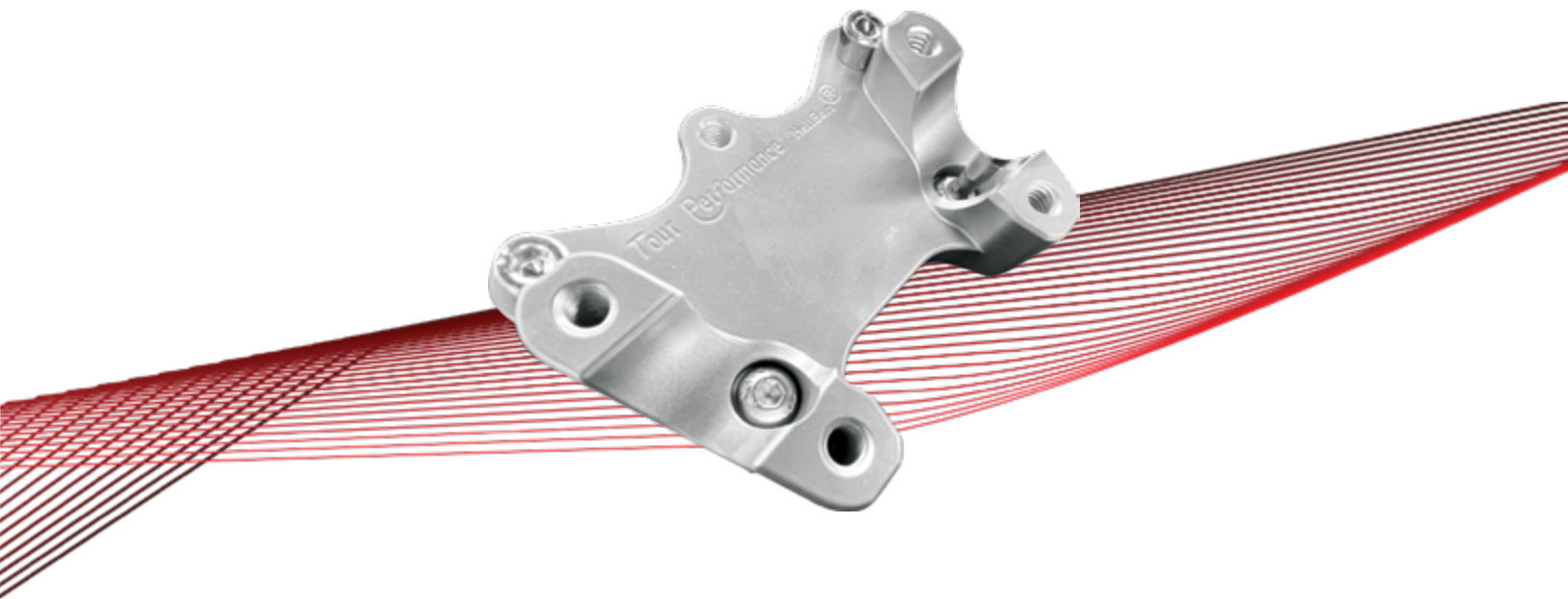




INSTALLATION INSTRUCTIONS

Triumph Tiger 660 2024 Handlebar Riser
Part No: **HR06189**



Important:
Please give customer enclosed information

Thank you for your purchase of our HeliBars®. They are designed to increase your long distance comfort and improve the handling of your sport motorcycle, and we feel confident you will enjoy them.

HELIBARS INSTALLATION

Improper installation could result in serious injury or death. Have a qualified mechanic install your HeliBars.

*Note the location of lines and cables.



CAUTION: Make sure the HeliBars tour performance riser is fully seated. Move bars carefully lock to lock and check clearance of: 1.Cables 2. Hydraulic lines 3.Wires 4.Fairing 5.Fuel tank. Torque all hardware to manufacturer's specifications.

Your HeliBars are designed to fit your motorcycle with little to no modifications needed to your stock cables and hydraulic lines. In order to achieve this fit, we do not simply increase the height at the fork tube/triple clamp area.

If you have installation questions, please call 1-800-859-4642.

Heli Modified, Inc. assumes no liability for any injury or loss of property which may result from improper installation or use of any HeliBars.

WARRANTY & RETURN POLICY

We make every effort to build a quality product so you can fully enjoy your riding experience. Thank you for your order.

HeliBars® may be returned for defects in materials and workmanship within one year from the date of shipment to the original purchaser, in which event the purchaser may receive a replacement set of HeliBars.

If within thirty (30) days of the shipping date you are not satisfied for any reason, you can return the HeliBars. Return policy is valid for original purchaser only. If HeliBars are purchased from a vendor other than Heli Modified, Inc., customer must contact vendor where purchased regarding returns. Refund will be extended to original purchaser only. There are no other warranties which extend beyond this. Conditions of this 30 day return policy:

1. Bars must not be used as a tie down point. (See attached 'Trailer Instructions').
2. Bars cannot be damaged, dented, or altered in any way.
3. Bars cannot be overtorqued.
4. Refund will be for product purchase price only, and credited to original purchaser only.

5. Product must be returned with all original equipment, documents and in original packaging. There must be no physical damage caused by the customer or by carrier.

6. A Return Authorization Number must be obtained from us before you return the product.

We reserve the right to charge a re-stocking fee of up to 25% if the above criteria are not met.

There are no further express or implied warranties including, but not limited to, implied warranties of merchantability or fitness for a particular purpose. By accepting this product, the consumer agrees to arbitrate and litigate any controversy in the state of Maine, and under the laws of the state of Maine.

Heli Modified Inc. Assumes no liability for any injury or loss of property which result from improper installation or use of any heli bars. All Heli Modified, Inc. Products should be installed by a qualified mechanic. Improper installation may cause death or injury.

Ride Safe and Enjoy!

TRIUMPH TIGER 660 2024 HANDLEBAR RISER

1" (25mm) taller

1.125" (28.5mm) closer to rider

Required Tools

- Torque wrench - 10+ ft. lbs.
- 6mm hex drive
- 5mm hex drive

1. Remove the rubber cable tie that groups the clutch cable with the front brake line and wire harnesses (**See Photo #1**).
2. Cover fuel tank, and both left and right side of fairing with protective material (**See Photo #2**). Using a 6mm hex drive loosen and remove the four mounting screws and the clamp cover.
3. Set the handlebar assembly in front of the risers (**See Photo #3**).
4. Clean the top of the risers and set the adapter in place so "Tour Performance" can be read from the saddle (**See Photo #4**). Install the two button head screws provided and thread them into the two rear holes closest to the rider (**See Photo 4, 2 black arrows**). Use a 5mm hex, bottom out the screws then loosen them 1/8 of a turn. Install the forward two standard cap head screws provided and snug them down finger tight with a 6mm hex.

5. Torque the button head screws to 12 ft. lbs. using a 5mm hex (**See Photo #5**).

6. Using a 6mm hex torque the forward two screws to 17 ft. lbs. (**See Photo #6**).

7. Set the handlebar assembly into the adapter and align punch mark with the corner of right clamp edge (**See Photo #7**). White arrow.

8. Install the top cover and the 4 factory screws. Snug the forward two screws first followed by the rear. Torque the forward screws first to 17 ft. lbs. (**See Photo #8**). Then torque the rear two screws to 17 ft. lbs.

For questions regarding installation please call 1-800-859-4642.

Heli Modified, Inc. assumes no liability for any injury or loss of property which may result from improper installation or use of any HeliBars.



Photo 1



Photo 2

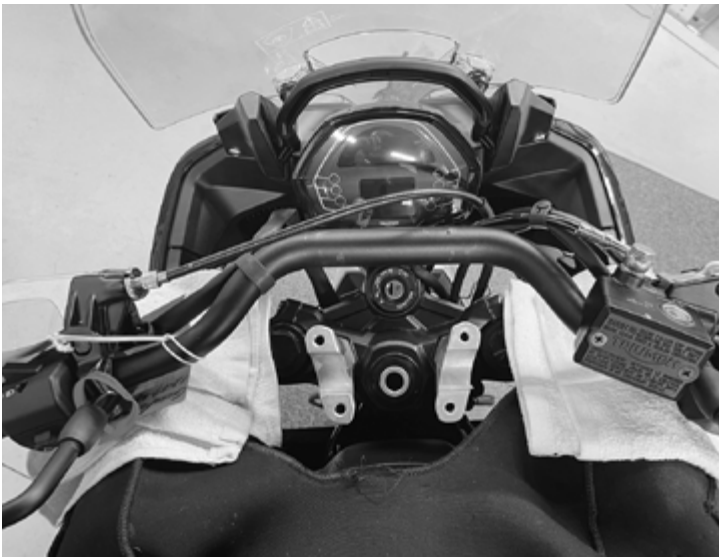


Photo 3

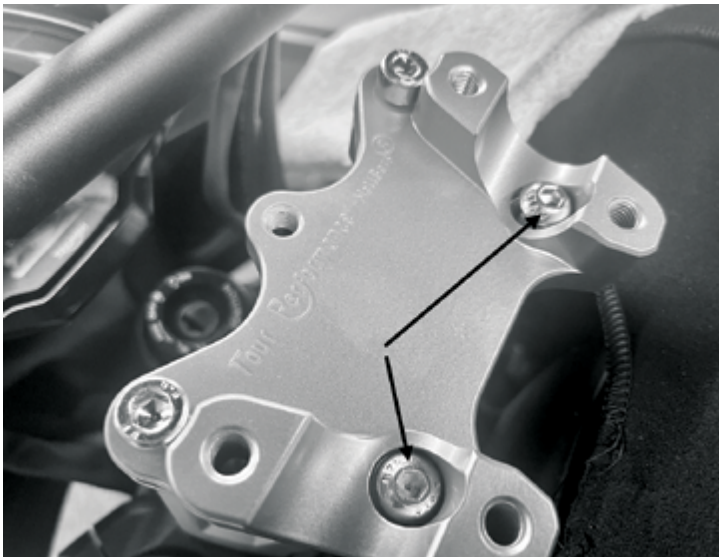


Photo 4

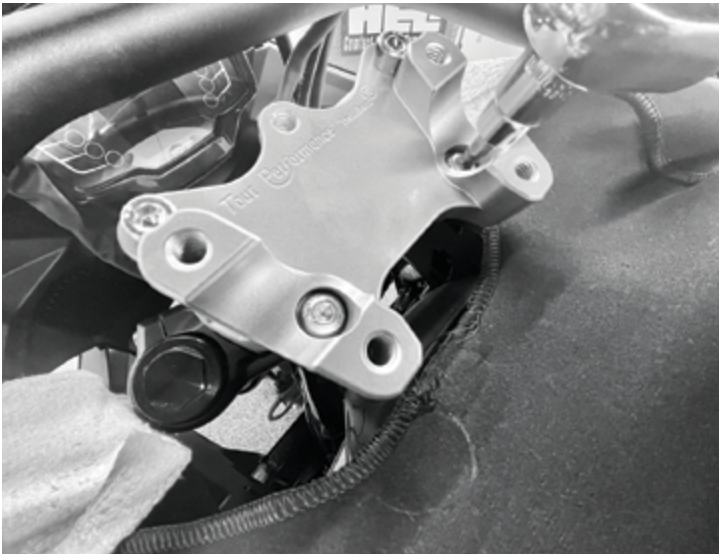


Photo 5

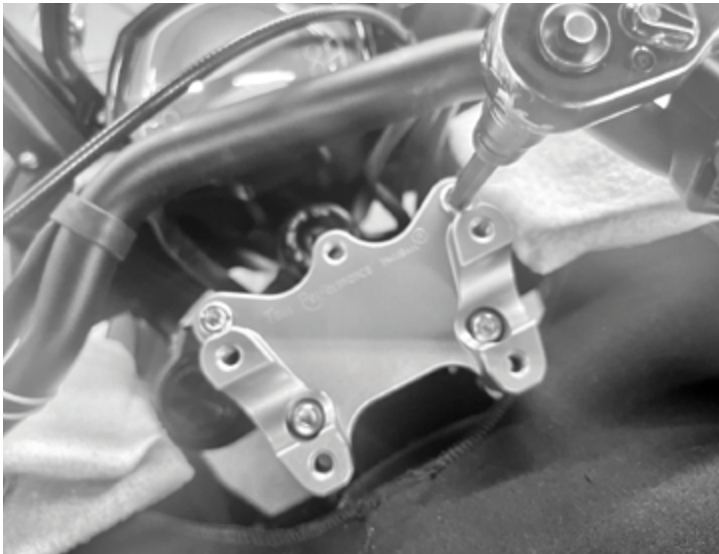


Photo 6



Photo 7



Photo 8

IMPORTANT INFORMATION ABOUT POWDER COATED HELIBARS

HeliBars® are finished with a polyester powder coating. The polyester is recommended for outdoor use because of its excellent UV resistant quality; if we were to use an epoxy it would tend to fade and chalk pretty quickly when exposed to sunlight and UV rays.

Care must be taken during installation because the finish can be scratched by the sharp surfaces of the controls and master cylinder clamps. When mounting the master cylinders to bars, do not let them move around the bars with the caps loose. Mount them in the proper position and hand tighten the screws until final adjustments are made; in this way you will lessen the possibility of scratching.

NOTE: Powder coat finish is not indestructible, there are chemicals which may react negatively when applied to finish. Brake fluid may cause deterioration of the finish. We do not recommend the use of acetone or similar chemicals for cleaning purposes. We would recommend the use of an over-the-

counter adhesive remover (such as Goo Gone) for the removal of any extraneous material. Please read labels directions for any cleaning/polishing product before use. If you have any questions regarding the use of any over-the-counter-products with the HeliBars, please call us before applying them to the powder coated finish.

If care is taken during installation, your HeliBars will continue to look as good as when they were new. They will look great for years to come with a bit of wax and careful cleaning. Thank you for your purchase, ride safe and enjoy!

Sincerely,

Harry Eddy
President

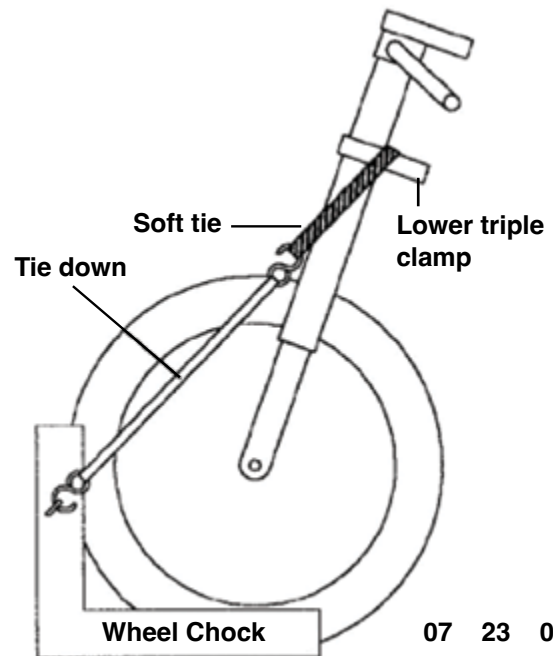
TRAILERING WITH HELIBARS

HeliBars clip ons and handlebars must not be used as the primary holding points for tie downs while trailering. As with your stock bars applying extreme force to the ends of the bars can bend the bars or rotate them on their mounts.

Use a wheel chock and pull the machine down and forward using soft ties or similar, attached to the lower triple clamp.

Bars should only be used as secondary attachment points to steady the motorcycle from lateral sway.

Failure to follow these guidelines can cause damage to the bars and the motorcycle, and may also void our warranty.



07 23 03 HGE